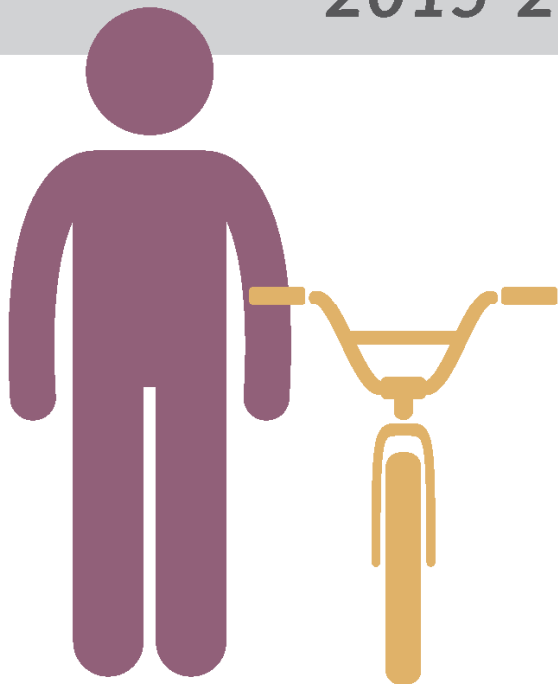




MaineDOT

State of Maine
**Pedestrian
& Bicycle
Crash History**

2015-2019



Prepared by:

Maine Department of Transportation
Office of Safety Crash Records Section
16 State House Station
Augusta, Maine 04333-0016

STATE OF MAINE
HIGHWAY PEDESTRIAN CRASHES
2015 - 2019

I. PREFACE i

II. PEDESTRIAN CRASH TABLES AND CHARTS 2015-2019

Crashes Summarized by:

County1-4

Severity 5-6

Fatal Crashes Location Map 7

Rural/Urban Designation 8

Month 9

Day of Week 10

Time of Day11

Age Groups 12

Age Groups by Gender 13

Apparent Physical Condition 14

Contributing Factors 15

Vehicle Type 16

Light Conditions 17

Weather Conditions 18

STATE OF MAINE

HIGHWAY PEDESTRIAN CRASHES

2015 - 2019

Preface

This publication is a statistical review of reported motor vehicle highway crashes that involved pedestrians in Maine during the five-year study period 2015- 2019. The statistics are compiled from crash reports submitted to the Department of Transportation by the Traffic Division, Department of Public Safety. The Traffic Division receives all police uniform crash reports Form 13:20 A, from state, county and local police agencies.

The enclosed charts, graphs, listings and summaries were produced using the Department of Transportation's Computerized Crash Records System. Fatalities data was provided by the Department of Public Safety. Except for adjustments to locations and crash-type information for accuracy, no attempt has been made to modify the raw data received from the reporting agencies. However, because crash scenes are often dangerous and chaotic, some inaccuracies in data collection are possible.

A comparison of this report with other summaries of crashes and fatalities may also reveal inconsistencies due to changes in crash classification, late submittals, and differing reporting criteria. Fatalities data is provided by the Department of Public Safety and does not include deaths that were later determined to be of natural causes.

The Department of Transportation and the Department of Public Safety wish to express our sincere thank you to all law enforcement agencies and officers for the work they do on crash investigations. Without their dedication, this report would not be possible.

A link to this publication can be found on the maine.gov website at:

mainedot.gov/safety/crash-data/

We welcome your comments and suggestions on this report at:

Maine Department of Transportation
Office of Safety
Crash Records Section
16 State House Station
Augusta, ME 04333-0016
Tel: 207-624-3616

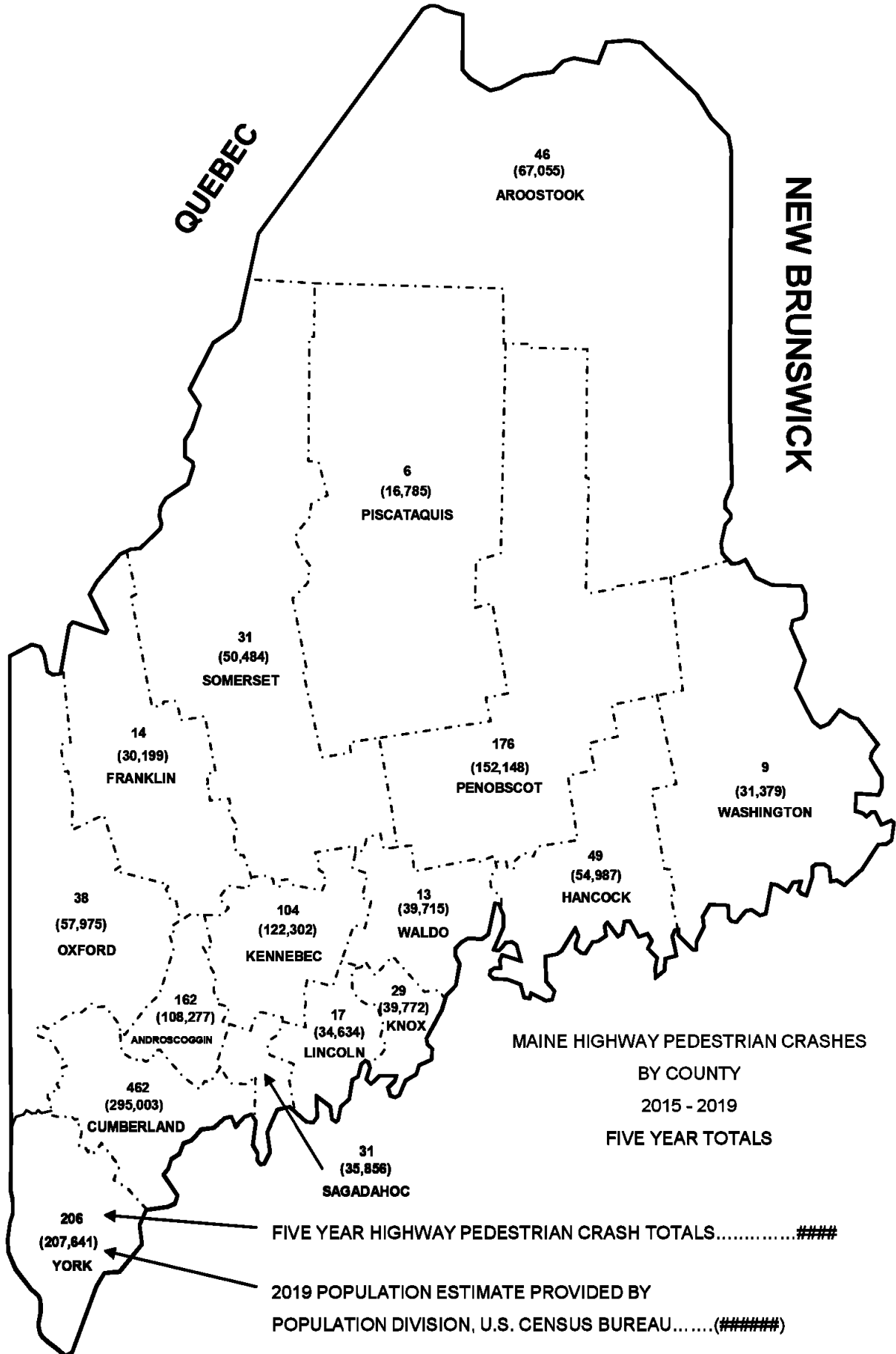




NEW HAMPSHIRE

QUEBEC

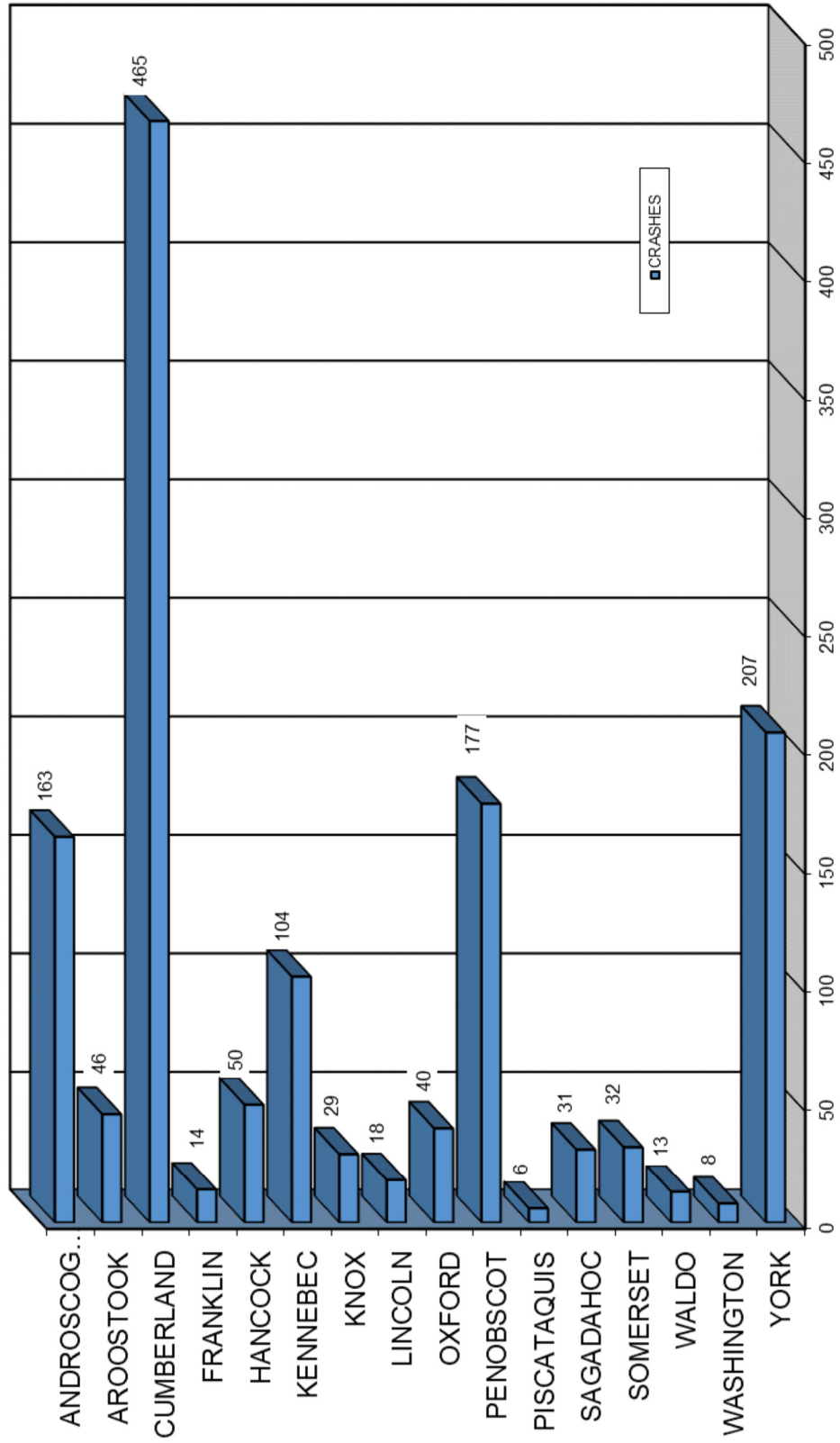
NEW BRUNSWICK



Produced by the Maine Department of Transportation

MAINE HIGHWAY PEDESTRIAN CRASHES BY COUNTY

2015 - 2019



MAINE HIGHWAY PEDESTRIAN CRASH SEVERITY BY COUNTY

2015 - 2019

COUNTY	INJURY TYPE	2015	2016	2017	2018	2019	TOTAL CRASHES	PERCENT OF TOTAL
ANDROSCOGGIN Percent Personal Injury 95.09%	FATAL (K)	3	2	3	0	2	10	0.71%
	SUSPECTED SERIOUS INJURY (A)	6	8	6	4	5	29	2.07%
	SUSPECTED MINOR INJURY (B)	9	4	12	8	3	36	2.57%
	POSSIBLE INJURY (C)	12	14	19	16	19	80	5.70%
	PROPERTY DAMAGE ONLY (PDO)	2	0	3	2	1	8	0.57%
	COUNTY SUBTOTAL	32	28	43	30	30	163	11.62%
AROOSTOOK Percent Personal Injury 95.65%	FATAL (K)	0	1	0	2	0	3	0.21%
	SUSPECTED SERIOUS INJURY (A)	1	1	4	2	5	13	0.93%
	SUSPECTED MINOR INJURY (B)	3	0	3	3	4	13	0.93%
	POSSIBLE INJURY (C)	3	4	2	3	3	15	1.07%
	PROPERTY DAMAGE ONLY (PDO)	2	0	0	0	0	2	0.14%
	COUNTY SUBTOTAL	9	6	9	10	12	46	3.28%
CUMBERLAND Percent Personal Injury 95.91%	FATAL (K)	3	5	6	1	6	21	1.50%
	SUSPECTED SERIOUS INJURY (A)	14	17	19	18	12	80	5.70%
	SUSPECTED MINOR INJURY (B)	25	28	19	27	39	138	9.84%
	POSSIBLE INJURY (C)	50	42	37	40	38	207	14.75%
	PROPERTY DAMAGE ONLY (PDO)	5	2	5	3	4	19	1.35%
	COUNTY SUBTOTAL	97	94	86	89	99	465	33.14%
FRANKLIN Percent Personal Injury 100.00%	FATAL (K)	0	1	0	0	0	1	0.07%
	SUSPECTED SERIOUS INJURY (A)	0	0	0	1	1	2	0.14%
	SUSPECTED MINOR INJURY (B)	1	0	2	0	2	5	0.36%
	POSSIBLE INJURY (C)	1	0	2	1	2	6	0.43%
	PROPERTY DAMAGE ONLY (PDO)	0	0	0	0	0	0	0.00%
	COUNTY SUBTOTAL	2	1	4	2	5	14	1.00%
HANCOCK Percent Personal Injury 96.00%	FATAL (K)	3	0	1	0	3	7	0.50%
	SUSPECTED SERIOUS INJURY (A)	2	3	1	3	1	10	0.71%
	SUSPECTED MINOR INJURY (B)	4	1	3	3	6	17	1.21%
	POSSIBLE INJURY (C)	3	4	1	3	3	14	1.00%
	PROPERTY DAMAGE ONLY (PDO)	1	1	0	0	0	2	0.14%
	COUNTY SUBTOTAL	13	9	6	9	13	50	3.56%
KENNEBEC Percent Personal Injury 91.26%	FATAL (K)	1	1	1	1	1	5	0.36%
	SUSPECTED SERIOUS INJURY (A)	2	1	3	2	1	9	0.64%
	SUSPECTED MINOR INJURY (B)	5	2	5	8	3	23	1.64%
	POSSIBLE INJURY (C)	17	10	9	13	9	58	4.13%
	PROPERTY DAMAGE ONLY (PDO)	4	3	1	0	1	9	0.64%
	COUNTY SUBTOTAL	29	17	19	24	15	104	7.41%
KNOX Percent Personal Injury 89.66%	FATAL (K)	1	0	1	0	1	3	0.21%
	SUSPECTED SERIOUS INJURY (A)	2	1	2	2	2	9	0.64%
	SUSPECTED MINOR INJURY (B)	1	0	1	0	2	4	0.29%
	POSSIBLE INJURY (C)	4	2	0	1	3	10	0.71%
	PROPERTY DAMAGE ONLY (PDO)	0	0	3	0	0	3	0.21%
	COUNTY SUBTOTAL	8	3	7	3	8	29	2.07%
LINCOLN Percent Personal Injury 88.89%	FATAL (K)	0	0	0	0	1	1	0.07%
	SUSPECTED SERIOUS INJURY (A)	0	2	0	1	1	4	0.29%
	SUSPECTED MINOR INJURY (B)	0	1	2	3	1	7	0.50%
	POSSIBLE INJURY (C)	1	0	1	0	2	4	0.29%
	PROPERTY DAMAGE ONLY (PDO)	0	0	1	1	0	2	0.14%
	COUNTY SUBTOTAL	1	3	4	5	5	18	1.28%

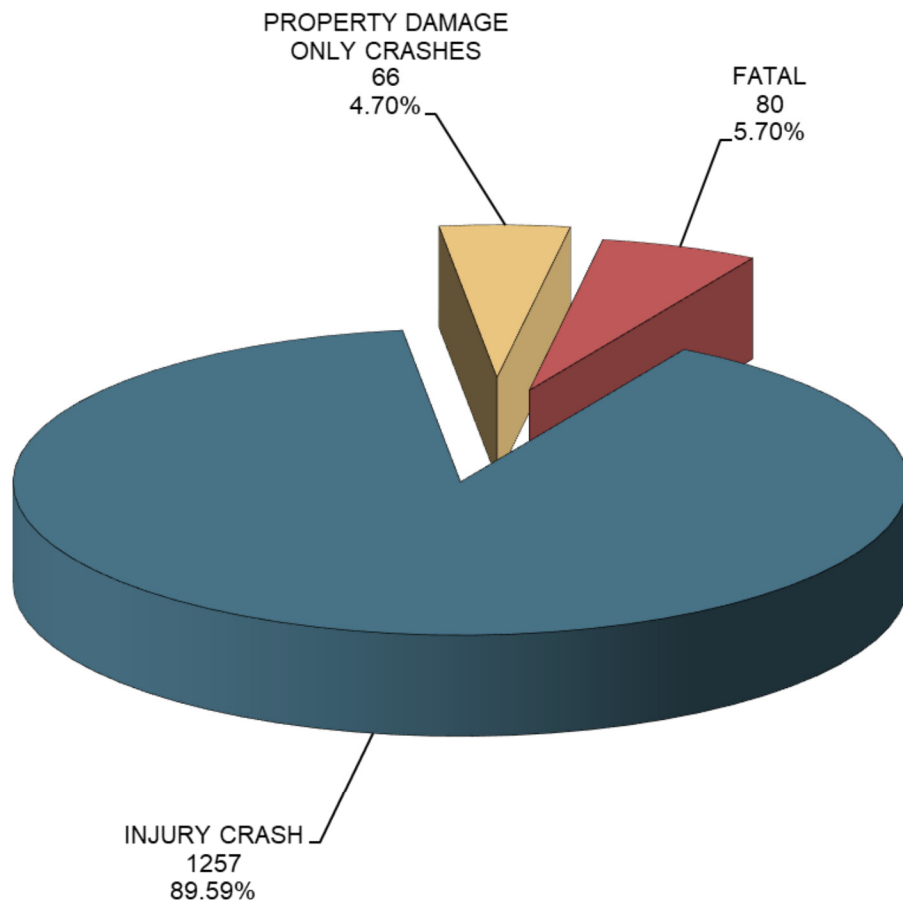


COUNTY	INJURY TYPE	2015	2016	2017	2018	2019	TOTAL CRASHES	PERCENT OF TOTAL
OXFORD Percent Personal Injury 97.50%	FATAL (K)	0	1	1	0	1	3	0.21%
	SUSPECTED SERIOUS INJURY (A)	2	1	1	2	2	8	0.57%
	SUSPECTED MINOR INJURY (B)	3	0	5	2	3	13	0.93%
	POSSIBLE INJURY (C)	2	4	2	4	3	15	1.07%
	PROPERTY DAMAGE ONLY (PDO)	0	0	0	0	1	1	0.07%
	COUNTY SUBTOTAL	7	6	9	8	10	40	2.85%
PENOBSCOT Percent Personal Injury 98.31%	FATAL (K)	3	1	2	1	2	9	0.64%
	SUSPECTED SERIOUS INJURY (A)	6	7	8	4	10	35	2.49%
	SUSPECTED MINOR INJURY (B)	6	10	6	8	22	52	3.71%
	POSSIBLE INJURY (C)	15	29	15	11	8	78	5.56%
	PROPERTY DAMAGE ONLY (PDO)	1	1	0	1	0	3	0.21%
	COUNTY SUBTOTAL	31	48	31	25	42	177	12.62%
PISCATAQUIS Percent Personal Injury 100.00%	FATAL (K)	0	0	0	0	0	0	0.00%
	SUSPECTED SERIOUS INJURY (A)	0	0	1	2	1	4	0.29%
	SUSPECTED MINOR INJURY (B)	0	0	0	0	1	1	0.07%
	POSSIBLE INJURY (C)	0	0	0	0	1	1	0.07%
	PROPERTY DAMAGE ONLY (PDO)	0	0	0	0	0	0	0.00%
	COUNTY SUBTOTAL	0	0	1	2	3	6	0.43%
SAGadahoc Percent Personal Injury 96.77%	FATAL (K)	0	1	0	0	0	1	0.07%
	SUSPECTED SERIOUS INJURY (A)	1	0	1	2	2	6	0.43%
	SUSPECTED MINOR INJURY (B)	5	0	4	4	3	16	1.14%
	POSSIBLE INJURY (C)	1	2	2	0	2	7	0.50%
	PROPERTY DAMAGE ONLY (PDO)	0	0	1	0	0	1	0.07%
	COUNTY SUBTOTAL	7	3	8	6	7	31	2.21%
SOMERSET Percent Personal Injury 83.38%	FATAL (K)	2	0	2	0	0	4	0.29%
	SUSPECTED SERIOUS INJURY (A)	2	1	0	2	1	6	0.43%
	SUSPECTED MINOR INJURY (B)	0	2	1	1	0	4	0.29%
	POSSIBLE INJURY (C)	4	2	3	1	3	13	0.93%
	PROPERTY DAMAGE ONLY (PDO)	1	2	1	1	0	5	0.36%
	COUNTY SUBTOTAL	9	7	7	5	4	32	2.28%
WALDO Percent Personal Injury 100.00%	FATAL (K)	0	0	0	0	0	0	0.00%
	SUSPECTED SERIOUS INJURY (A)	0	1	1	0	0	2	0.14%
	SUSPECTED MINOR INJURY (B)	0	0	1	2	1	4	0.29%
	POSSIBLE INJURY (C)	3	1	0	1	2	7	0.50%
	PROPERTY DAMAGE ONLY (PDO)	0	0	0	0	0	0	0.00%
	COUNTY SUBTOTAL	3	2	2	3	3	13	0.93%
WASHINGTON Percent Personal Injury 100.00%	FATAL (K)	1	1	1	1	0	4	0.29%
	SUSPECTED SERIOUS INJURY (A)	0	1	0	0	0	1	0.07%
	SUSPECTED MINOR INJURY (B)	1	0	1	0	0	2	0.14%
	POSSIBLE INJURY (C)	0	0	0	0	1	1	0.07%
	PROPERTY DAMAGE ONLY (PDO)	0	0	0	0	0	0	0.00%
	COUNTY SUBTOTAL	2	2	2	1	1	8	0.57%
YORK Percent Personal Injury 94.69%	FATAL (K)	2	3	1	1	1	8	0.57%
	SUSPECTED SERIOUS INJURY (A)	6	3	6	9	6	30	2.14%
	SUSPECTED MINOR INJURY (B)	13	13	12	12	9	59	4.21%
	POSSIBLE INJURY (C)	19	18	21	17	24	99	7.06%
	PROPERTY DAMAGE ONLY (PDO)	3	1	5	1	1	11	0.78%
	COUNTY SUBTOTAL	43	38	45	40	41	207	14.75%
COUNTY GRAND TOTAL Percent Personal Injury 95.30%	FATAL (K)	19	17	19	7	18	80	5.70%
	SUSPECTED SERIOUS INJURY (A)	44	47	53	54	50	248	17.68%
	SUSPECTED MINOR INJURY (B)	76	61	77	81	99	394	28.08%
	POSSIBLE INJURY (C)	135	132	114	111	123	615	43.83%
	PROPERTY DAMAGE ONLY (PDO)	19	10	20	9	8	66	4.70%
	GRAND TOTAL	293	267	283	262	298	1,403	100.00%

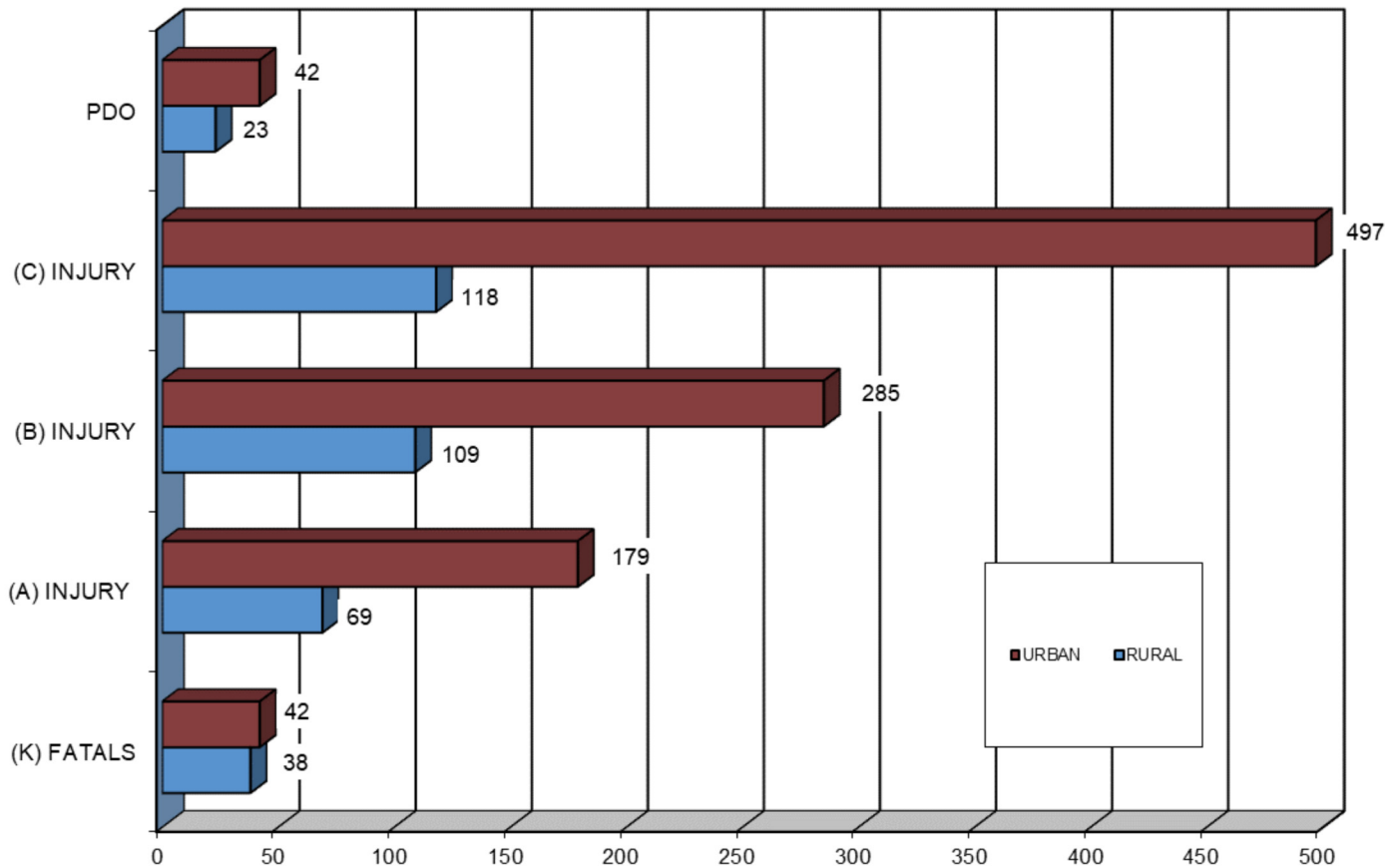


MAINE HIGHWAY PEDESTRIAN CRASHES 2015 - 2019

1,386 Total Pedestrian Crashes



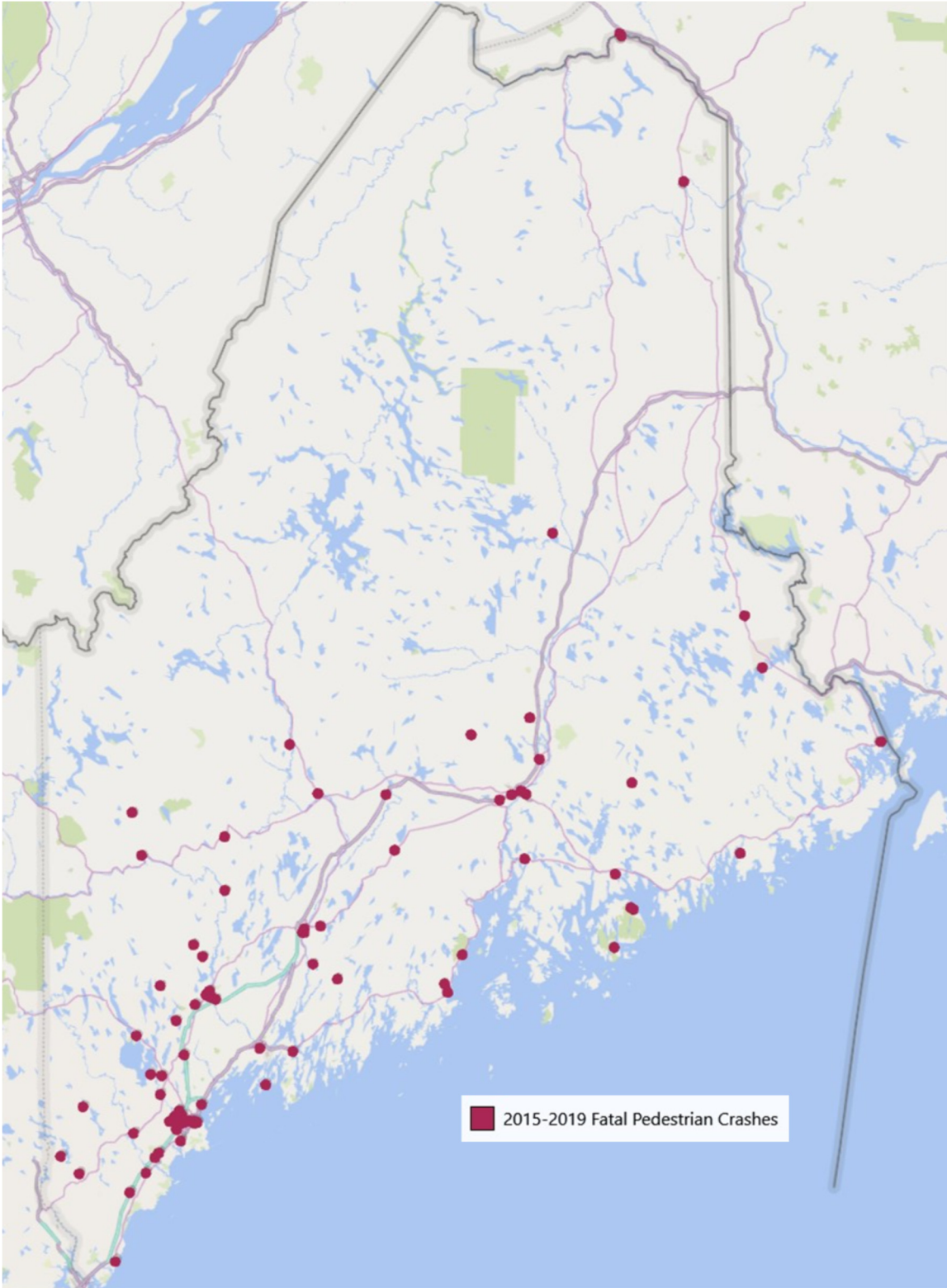
MAINE HIGHWAY PEDESTRIAN CRASH SEVERITY BY YEAR 2015 - 2019



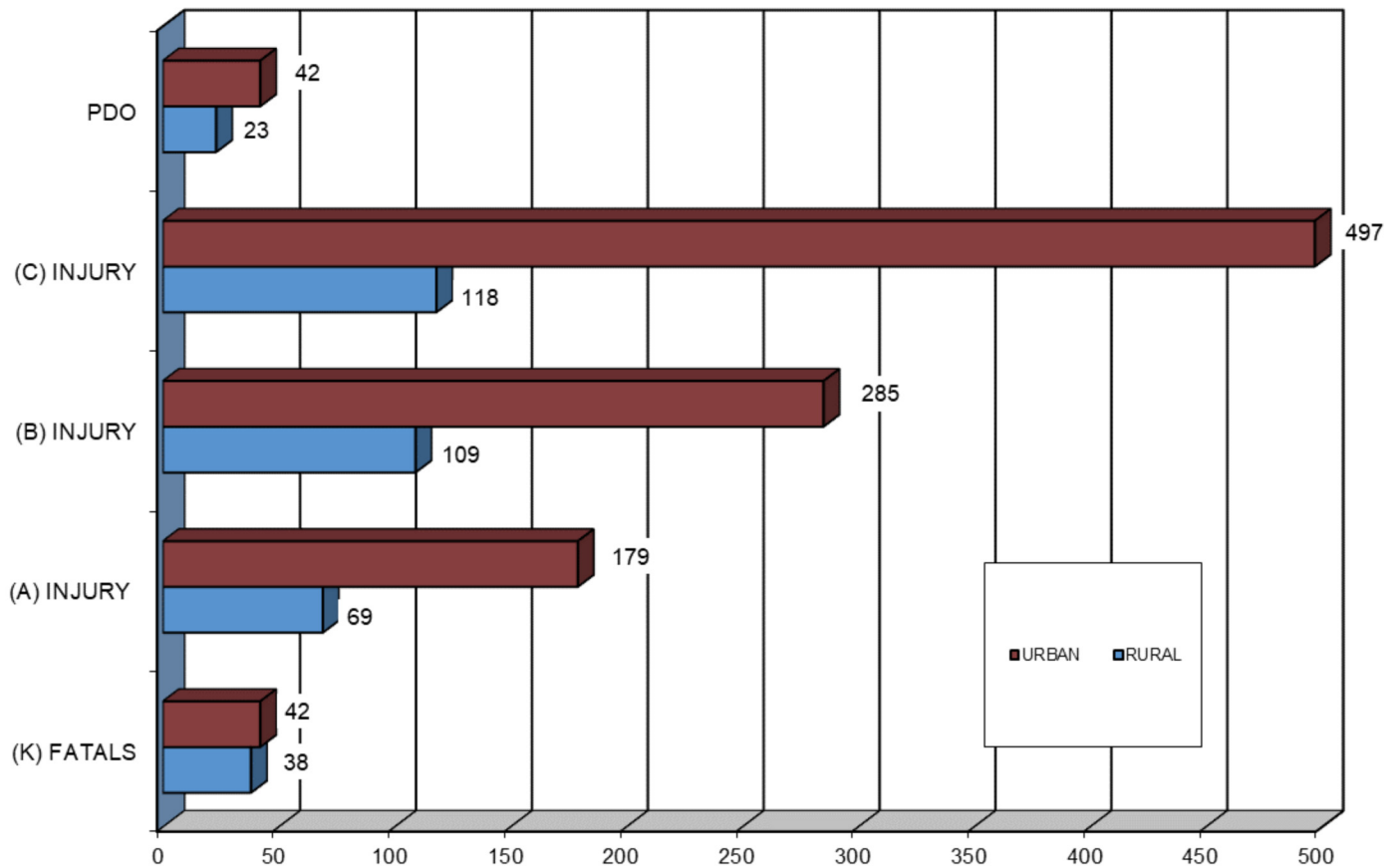
RURAL URBAN DESIGNATION	FATAL CRASHES (K)	SUSPECTED SERIOUS INJURY (A)	SUSPECTED MINOR INJURY (B)	POSSIBLE INJURY (C)	PROPERTY DAMAGE ONLY (PDO)	FIVE YEAR TOTAL
RURAL	38	69	109	118	23	357
URBAN	42	179	285	497	42	1045
UNKNOWN	0	0	0	0	1	1
TOTAL	80	248	394	615	66	1,403



MAINE HIGHWAY PEDESTRIAN FATAL CRASH LOCATIONS 2015 - 2019



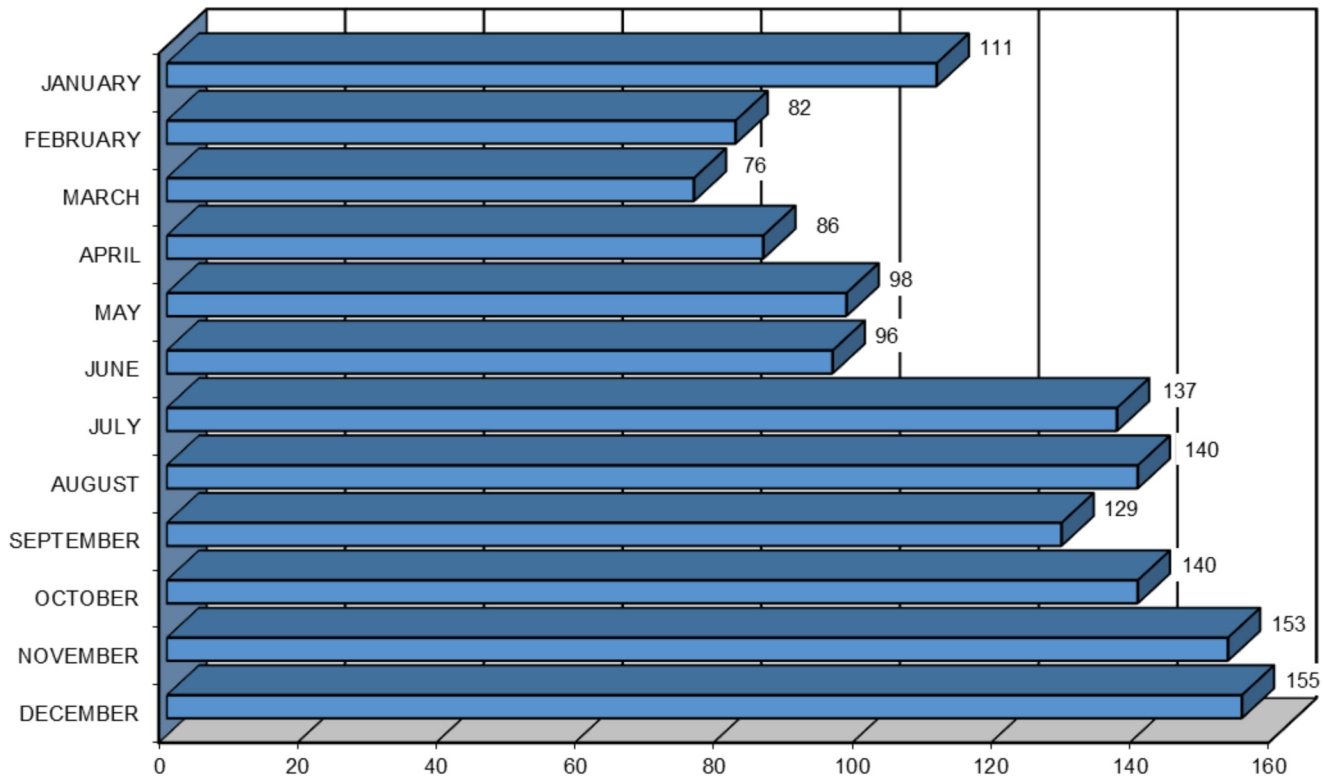
MAINE HIGHWAY PEDESTRIAN CRASH SEVERITY BY RURAL URBAN DESIGNATION 2015 - 2019



RURAL URBAN DESIGNATION	FATAL CRASHES (K)	SUSPECTED SERIOUS INJURY (A)	SUSPECTED MINOR INJURY (B)	POSSIBLE INJURY (C)	PROPERTY DAMAGE ONLY (PDO)	FIVE YEAR TOTAL
RURAL	38	69	109	118	23	357
URBAN	42	179	285	497	42	1045
UNKNOWN	0	0	0	0	1	1
TOTAL	80	248	394	615	66	1,403



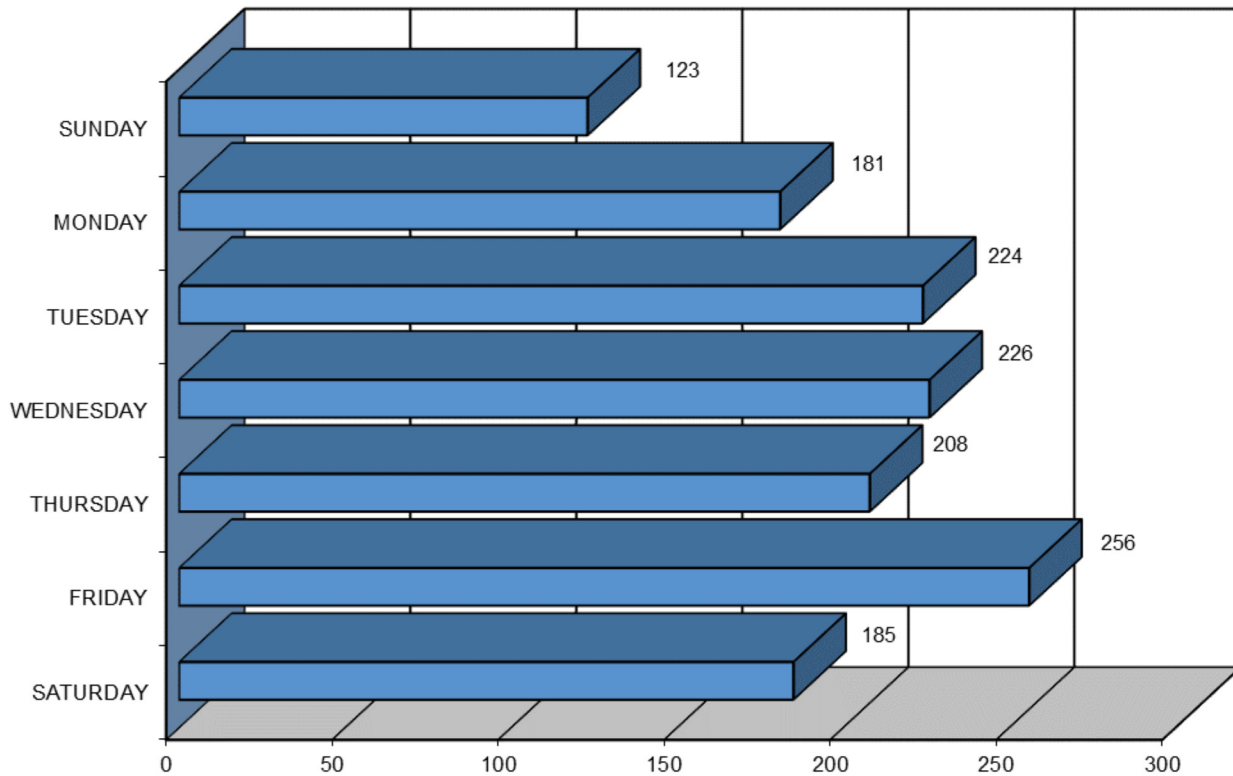
MAINE HIGHWAY PEDESTRIAN CRASHES BY MONTH 2015 - 2019



MONTH	2015	2016	2017	2018	2019	FIVE YEAR TOTAL	PERCENT OF TOTAL
JANUARY	21	21	27	20	22	111	7.91%
FEBRUARY	17	16	21	12	16	82	5.84%
MARCH	21	14	11	13	17	76	5.42%
APRIL	22	16	13	15	20	86	6.13%
MAY	16	17	28	14	23	98	6.99%
JUNE	16	25	12	19	24	96	6.84%
JULY	30	25	34	24	24	137	9.76%
AUGUST	20	30	22	34	34	140	9.98%
SEPTEMBER	25	21	29	25	29	129	9.19%
OCTOBER	27	23	32	31	27	140	9.98%
NOVEMBER	35	34	27	27	30	153	10.91%
DECEMBER	43	25	27	28	32	155	11.05%
TOTAL	293	267	283	262	298	1,403	100.00%



MAINE HIGHWAY PEDESTRIAN CRASHES BY DAY OF THE WEEK 2015 - 2019



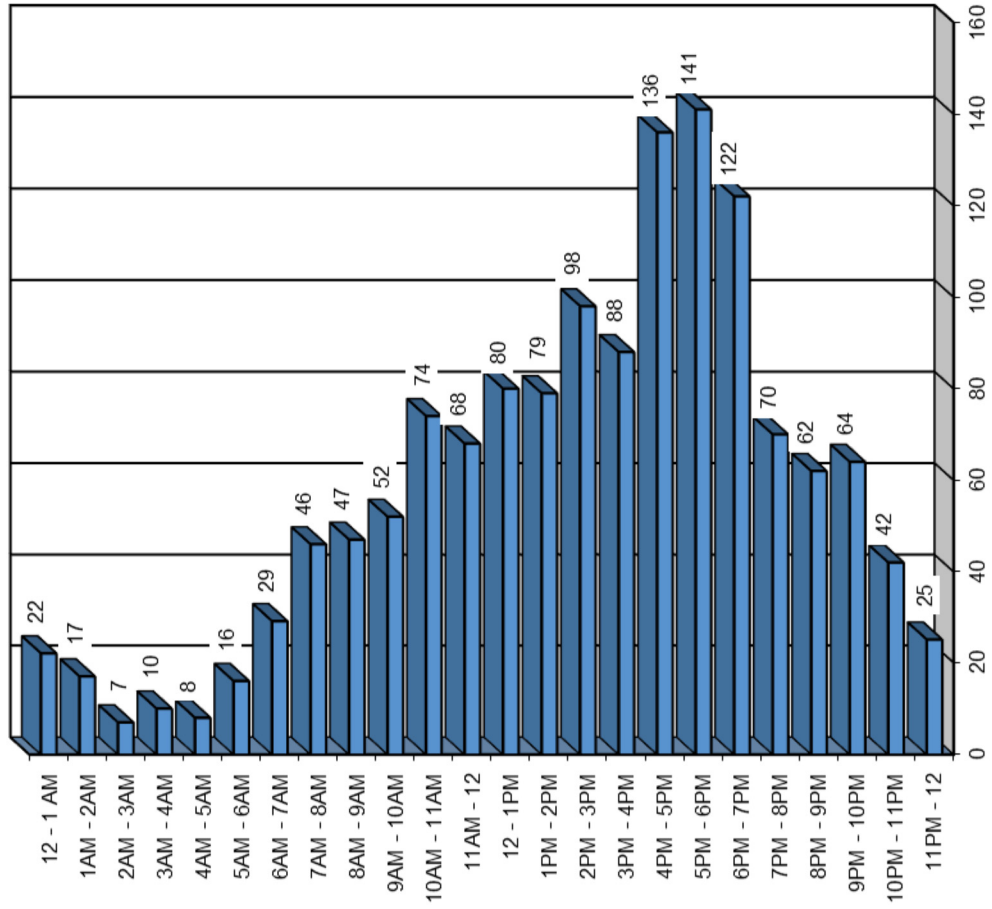
DAY OF THE WEEK	2015	2016	2017	2018	2019	FIVE YEAR TOTAL	PERCENT OF TOTAL
SUNDAY	27	22	29	18	27	123	8.77%
MONDAY	43	34	31	39	34	181	12.90%
TUESDAY	46	46	49	41	42	224	15.97%
WEDNESDAY	45	59	32	45	45	226	16.11%
THURSDAY	49	36	47	31	45	208	14.83%
FRIDAY	51	42	60	48	55	256	18.25%
SATURDAY	32	28	35	40	50	185	13.19%
TOTAL	293	267	283	262	298	1,403	100.00%



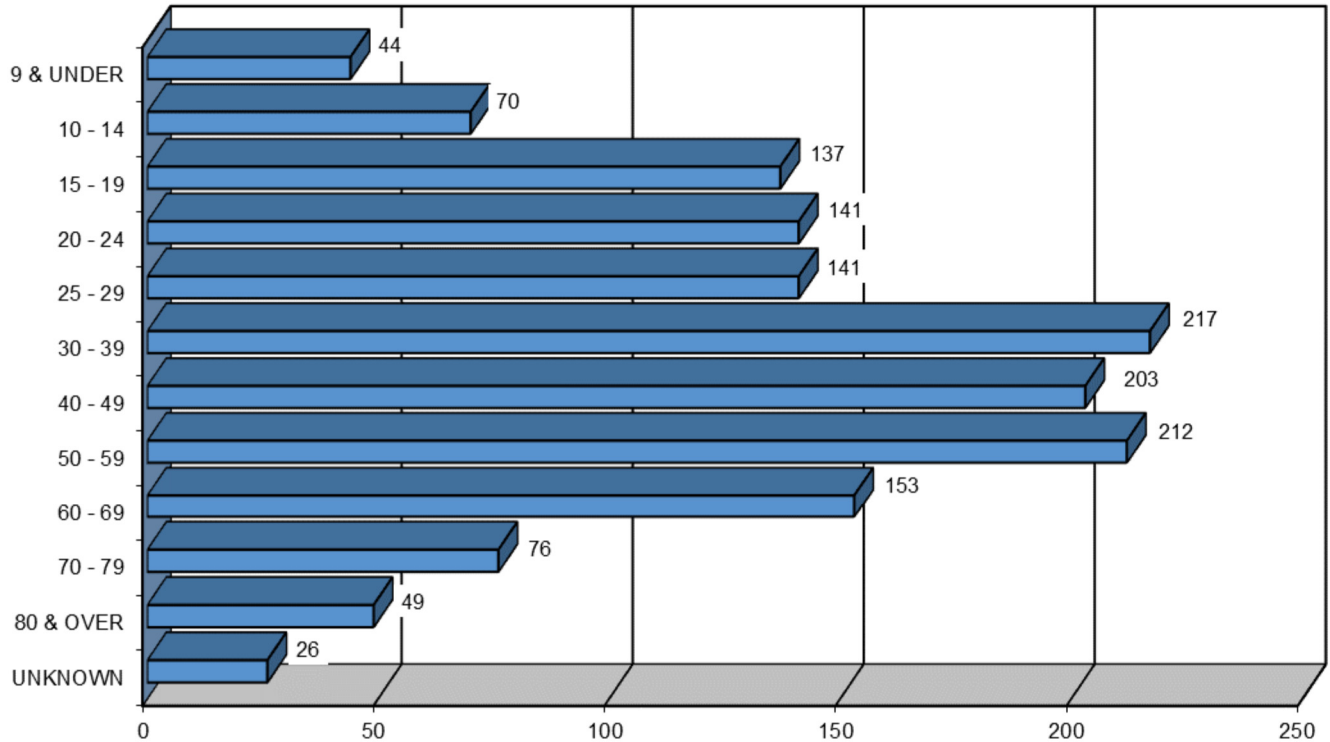
MAINE HIGHWAY PEDESTRIAN CRASHES

BY TIME OF DAY

2015 - 2019



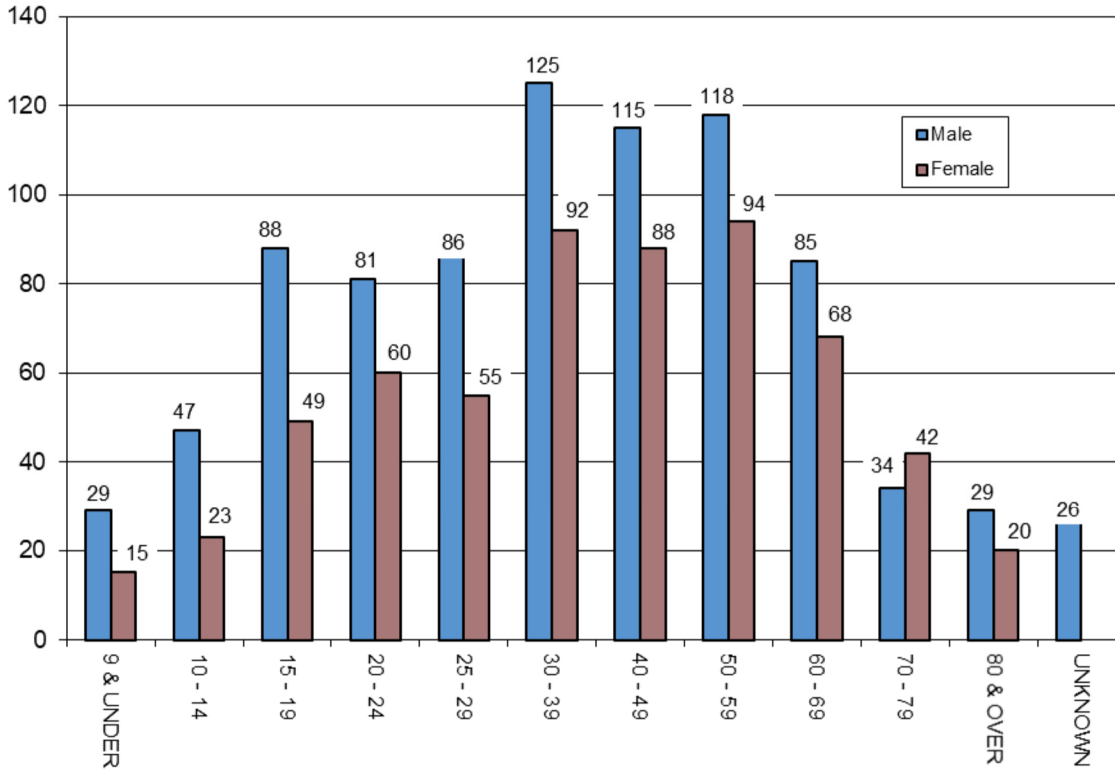
PEDESTRIANS INVOLVED IN MAINE HIGHWAY CRASHES BY AGE GROUP 2015 - 2019



AGE GROUP OF PEDESTRIAN	2015	2016	2017	2018	2019	FIVE YEAR TOTAL	PERCENT OF TOTAL
9 & UNDER	11	9	6	8	10	44	3.00%
10 - 14	9	10	18	16	17	70	4.77%
15 - 19	34	26	34	21	22	137	9.33%
20 - 24	27	34	32	21	27	141	9.60%
25 - 29	31	31	28	23	28	141	9.60%
30 - 39	44	36	34	44	59	217	14.77%
40 - 49	40	53	37	31	42	203	13.82%
50 - 59	48	39	51	40	34	212	14.43%
60 - 69	39	18	28	36	32	153	10.42%
70 - 79	9	14	14	18	21	76	5.17%
80 & OVER	6	10	11	11	11	49	3.34%
UNKNOWN	7	3	9	5	2	26	1.77%
TOTAL	305	283	302	274	305	1,469	100.00%



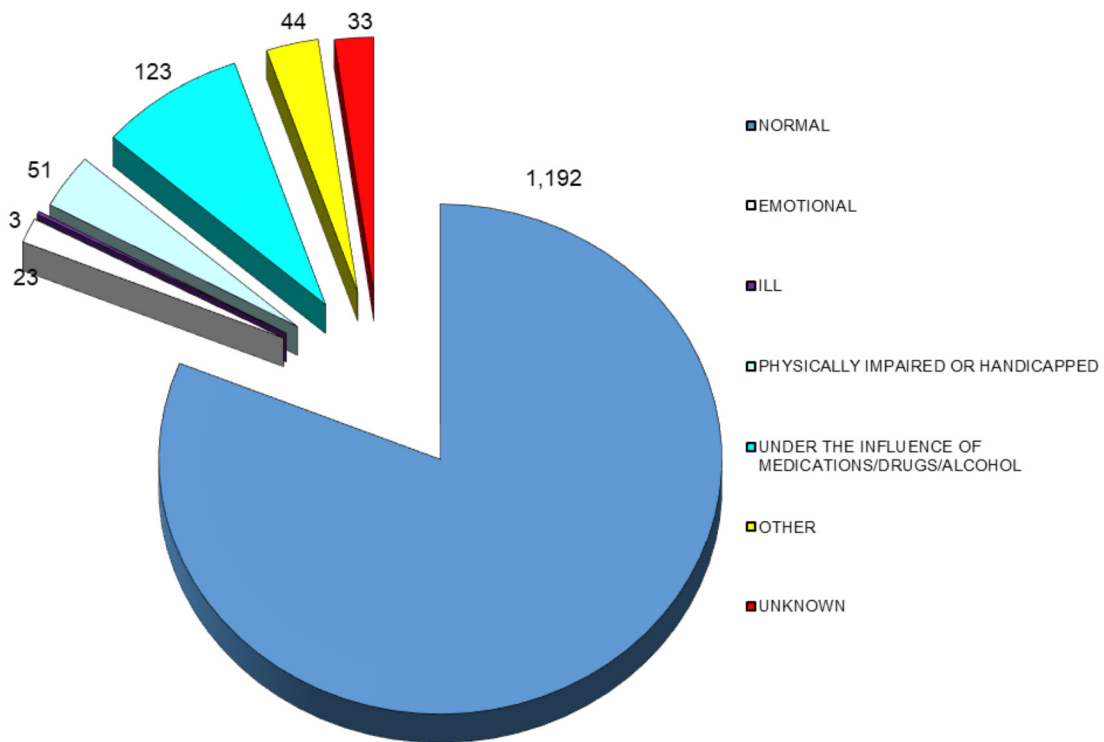
PEDESTRIANS INVOLVED IN MAINE HIGHWAY CRASHES BY AGE GROUP AND GENDER 2015 - 2019



AGE GROUP OF PEDESTRIAN BY GENDER	2015		2016		2017		2018		2019		TOTALS		FIVE YEAR TOTAL	PERCENT OF TOTAL
	M	F	M	F	M	F	M	F	M	F	M	F		
9 & UNDER	7	4	5	4	3	3	6	2	8	2	29	15	44	3.00%
10 - 14	6	3	6	4	8	10	12	4	15	2	47	23	70	4.77%
15 - 19	23	11	17	9	24	10	11	10	13	9	88	49	137	9.33%
20 - 24	15	12	18	16	26	6	14	7	8	19	81	60	141	9.60%
25 - 29	19	12	17	14	19	9	14	9	17	11	86	55	141	9.60%
30 - 39	29	15	23	13	20	14	25	19	28	31	125	92	217	14.77%
40 - 49	22	18	26	27	24	13	22	9	21	21	115	88	203	13.82%
50 - 59	32	16	15	24	28	23	21	19	22	12	118	94	212	14.43%
60 - 69	20	19	12	6	14	14	19	17	20	12	85	68	153	10.42%
70 - 79	6	3	5	9	8	6	8	10	7	14	34	42	76	5.17%
80 & OVER	4	2	4	6	9	2	5	6	7	4	29	20	49	3.34%
UNKNOWN	7		3		9		5		2		26		26	1.77%
TOTAL BY GENDER	183	115	148	132	183	110	157	112	166	137	837	606		
TOTAL	305		283		302		274		305		1,469		1,469	100.00%



MAINE HIGHWAY PEDESTRIAN CRASHES BY APPARENT PHYSICAL CONDITIONS 2015 - 2019



PEDESTRIAN PHYSICAL CONDITION	2015	2016	2017	2018	2019	FIVE YEAR TOTAL	PERCENT OF TOTAL
APPARENTLY NORMAL	257	221	241	217	256	1,192	81.14%
ASLEEP OR FATIGUED	0	0	0	0	0	0	0.00%
EMOTIONAL (depressed, angry, disturbed, etc.)	3	3	4	3	10	23	1.57%
ILL (sick)	1	1	0	0	1	3	0.20%
PHYSICALLY IMPAIRED OR HANDICAPPED	5	11	11	15	9	51	3.47%
UNDER THE INFLUENCE OF MEDICATIONS/DRUGS/ALCOHOL	22	31	28	20	22	123	8.37%
OTHER	10	7	9	11	7	44	3.00%
UNKNOWN	7	9	9	8	0	33	2.25%
TOTAL	305	283	302	274	305	1,469	100.00%



CONTRIBUTING FACTORS TO MAINE HIGHWAY PEDESTRIAN CRASHES, 2015 - 2019

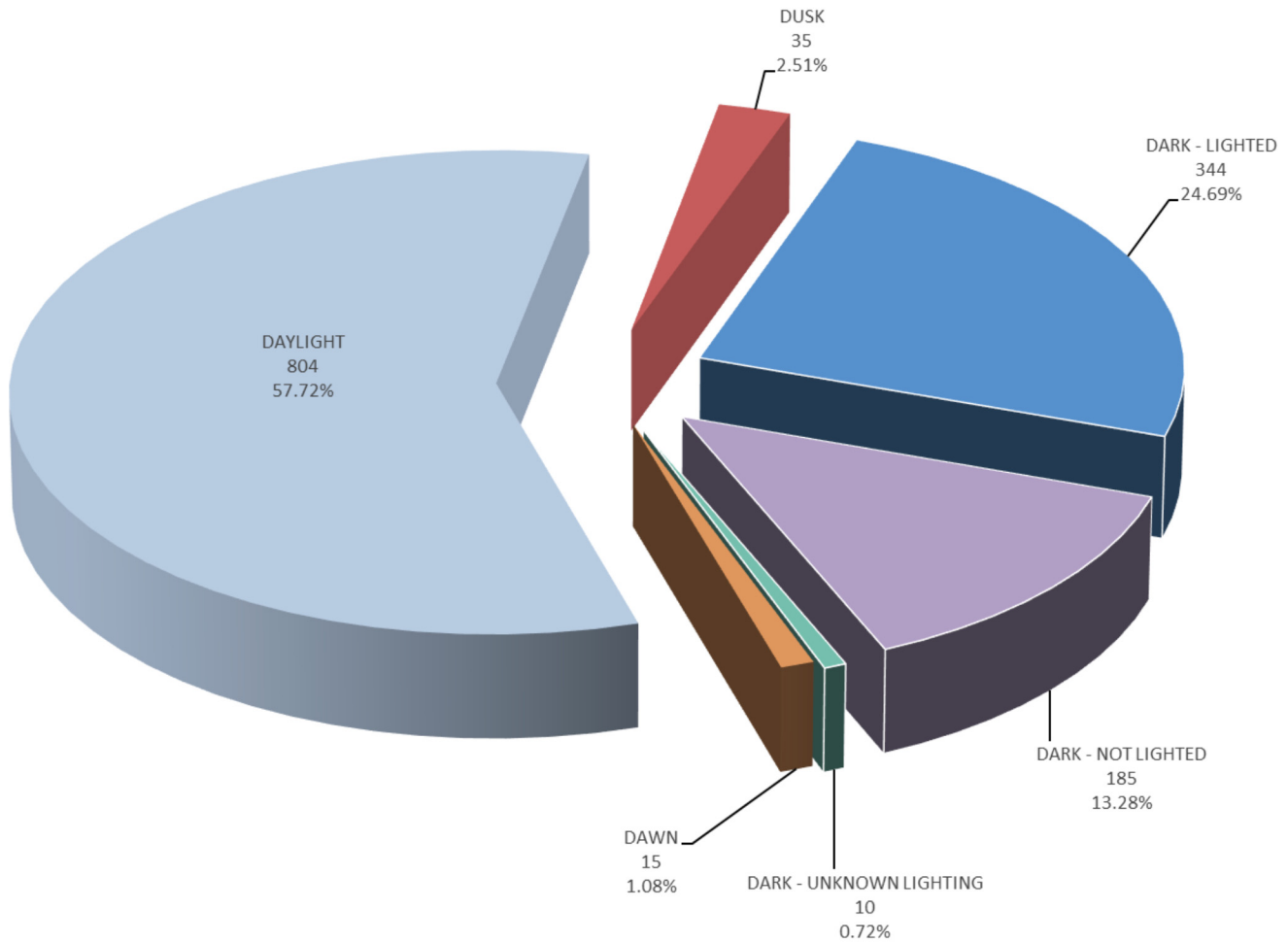
DRIVER ACTIONS (actions 1 & 2 combined)	2015	2016	2017	2018	2019	Totals
NO CONTRIBUTING ACTION	114	99	117	116	120	566
RAN OFF ROADWAY	5	7	3	5	10	30
FAILED TO YIELD RIGHT-OF-WAY	60	72	63	53	88	336
RAN RED LIGHT	1	0	1	1	0	3
RAN STOP SIGN	1	4	1	2	1	9
DISREGARDED OTHER TRAFFIC SIGN	3	0	2	6	1	12
DISREGARDED OTHER ROAD MARKINGS	6	2	3	3	1	15
EXCEEDED POSTED SPEED LIMIT	0	0	1	1	0	2
DROVE TOO FAST FOR CONDITIONS	2	2	3	6	3	16
IMPROPER TURN	0	2	4	4	8	18
IMPROPER BACKING	10	6	5	11	7	39
IMPROPER PASSING	1	4	0	1	1	7
WRONG WAY	1	0	0	0	0	1
FOLLOWED TOO CLOSELY	0	1	0	2	1	4
FAILED TO KEEP IN PROPER LANE	1	4	7	9	5	26
OPERATED MOTOR VEHICLE IN ERRATIC, RECKLESS, CARELESS, NEGLIGENT OR AGGRESSIVE MANNER	21	9	9	13	13	65
SWERVED OR AVOIDED DUE TO WIND, SLIPPERY SURFACE, MOTOR VEHICLE, OBJECT, NON-MOTORIST IN ROADWAY	3	1	3	3	3	13
OVER-CORRECTING/OVER-STEERING	4	1	0	0	1	6
OTHER CONTRIBUTING ACTION	21	21	20	26	21	109
UNKNOWN	16	17	11	15	11	70
TOTAL	270	252	253	277	295	1347
PEDESTRIAN ACTIONS						
CROSSING WITH SIGNAL	12	27	25	20	3	87
CROSSING AGAINST SIGNAL	13	25	13	11	35	97
CROSSING MARKED CROSSWALK (no signal)	53	57	62	60	70	302
CROSSING NO SIGNAL OR CROSSWALK	74	64	70	65	22	295
WALKING IN ROAD WITH TRAFFIC	20	13	19	22	17	91
WALKING IN ROAD AGAINST TRAFFIC	8	6	11	9	8	42
STANDING IN ROAD	21	12	13	6	6	58
EMERGING FROM BEHIND PARKED CAR	3	2	5	3	0	13
CHILD GETTING ON/OFF SCHOOL BUS	1	0	0	1	72	74
GETTING ON/OFF VEHICLE	5	4	5	3	0	17
PUSHING OR WORKING ON VEHICLE	0	1	2	5	1	9
WORKING IN ROAD	9	5	5	7	8	34
PLAYING IN ROAD	1	2	6	3	2	14
NOT IN ROAD	17	10	10	11	8	56
FOLLOWING TRAIL	0	0	0	0	0	0
WALKING ON SIDEWALK	7	9	6	8	9	39
WALKING ADJACENT TO ROADWAY	17	8	10	5	12	52
WALKING TO/FROM SCHOOL	0	0	1	0	0	1
OTHER PEDESTRIAN ACTION	37	33	34	35	32	171
TOTAL	298	278	297	274	305	1452
VEHICULAR FACTORS						
NONE	252	230	241	244	255	1222
BRAKES	1	1	1	1	3	7
EXHAUST SYSTEM	0	0	0	0	0	0
BODY, DOORS	1	1	1	0	1	4
STEERING	0	0	0	0	0	0
POWER TRAIN	0	1	0	1	0	2
SUSPENSION	0	0	0	0	0	0
TIRES	2	0	0	0	0	2
WHEELS	0	0	0	0	1	1
LIGHTS (head, signal, tail, brake)	0	0	1	1	0	2
WINDOWS/WINDSHIELD	1	1	1	0	1	4
MIRRORS	0	1	0	0	2	3
WIPERS	0	0	0	0	0	0
TRUCK COUPLING/TRAILER HITCH/SAFETY CHAINS	0	0	0	0	0	0
OTHER	6	3	2	6	4	21
TOTAL	263	238	247	253	267	1268

VEHICLES INVOLVED IN
MAINE HIGHWAY PEDESTRIAN CRASHES
2015 - 2019

VEHICLE TYPE INVOLVED IN PEDESTRIAN CRASHES	2015	2016	2017	2018	2019	FIVE YEAR TOTAL
PASSENGER CAR	154	128	140	123	149	694
(SPORT) UTILITY VEHICLE	53	48	49	55	47	252
PASSENGER VAN	9	11	12	5	6	43
CARGO VAN (10k lbs or less)	2	4	1	1	5	13
PICKUP TRUCK	51	48	48	46	51	244
MOTOR HOME	0	0	0	0	0	0
SCHOOL BUS	1	1	0	0	2	4
TRANSIT BUS	2	0	2	0	1	5
MOTOR COACH	0	0	0	0	0	0
OTHER BUS	0	0	1	1	0	2
MOTORCYCLE	1	4	3	2	1	11
MOPED	0	1	0	1	1	3
LOW SPEED VEHICLE	0	0	0	0	0	0
AUTOCYCLE	0	0	0	0	0	0
EXPERIMENTAL	0	0	0	0	0	0
OTHER LIGHT TRUCK (10,000 lbs or less)	0	0	0	2	0	2
MEDIUM /HEAVY TRUCKS (more than 10,000 lbs)	8	6	2	16	4	36
ATV (2,3,4-WHEEL)	0	0	2	0	1	3
SNOWMOBILE	0	0	0	0	0	0
PEDESTRIAN	305	283	302	274	305	1,469
BICYCLE	1	0	0	0	0	1
OTHER	6	3	16	1	2	28
TOTAL VEHICLES INVOLVED	593	537	578	527	575	2,810



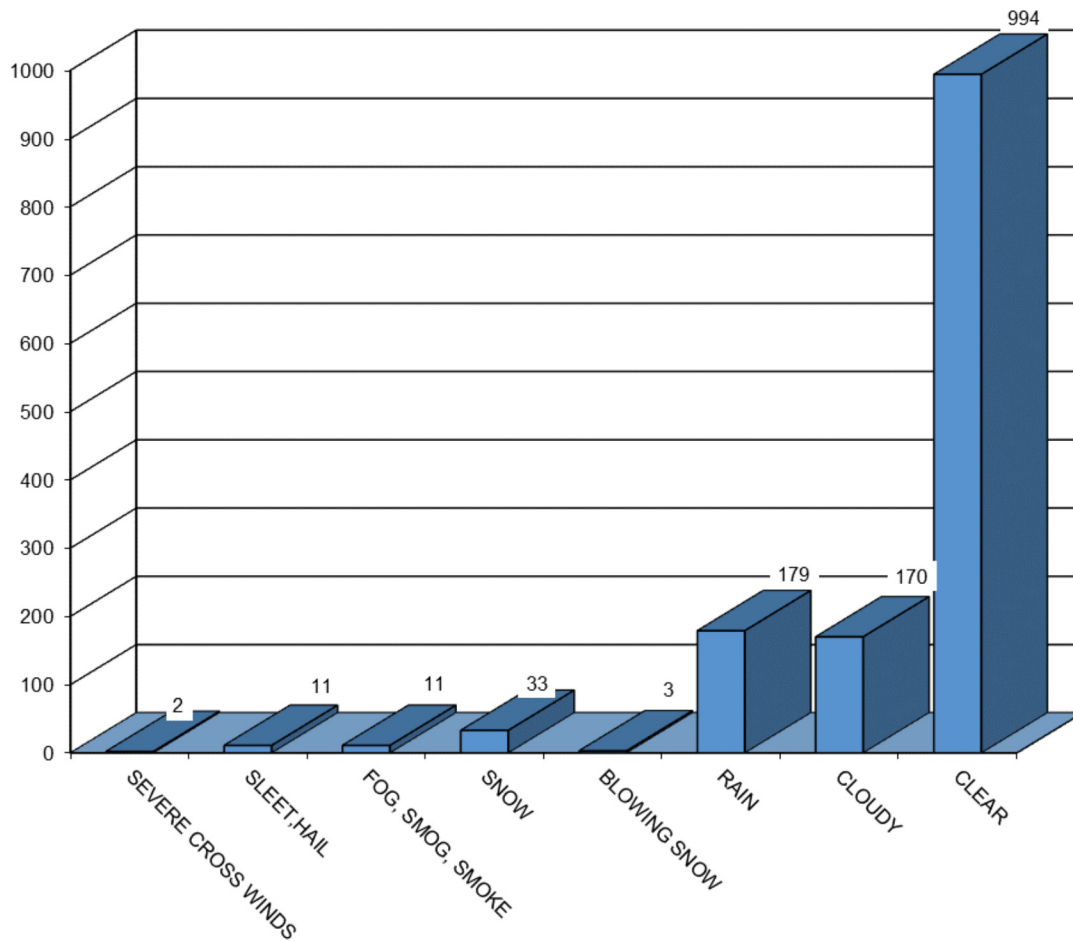
MAINE HIGHWAY PEDESTRIAN CRASHES BY LIGHT CONDITION 2015 - 2019



LIGHT CONDITION	2015	2016	2017	2018	2019	FIVE YEAR TOTAL	PERCENT OF TOTAL
Dark - Lighted	73	72	72	56	72	345	24.59%
Dark - Not Lighted	45	32	36	39	35	187	13.33%
Dark - Unknown Lighting	1	3	4	1	1	10	0.71%
Dawn	3	4	4	2	3	16	1.14%
Daylight	162	153	157	157	180	809	57.66%
Dusk	9	3	10	7	7	36	2.57%
Total	293	267	283	262	298	1403	100.00%



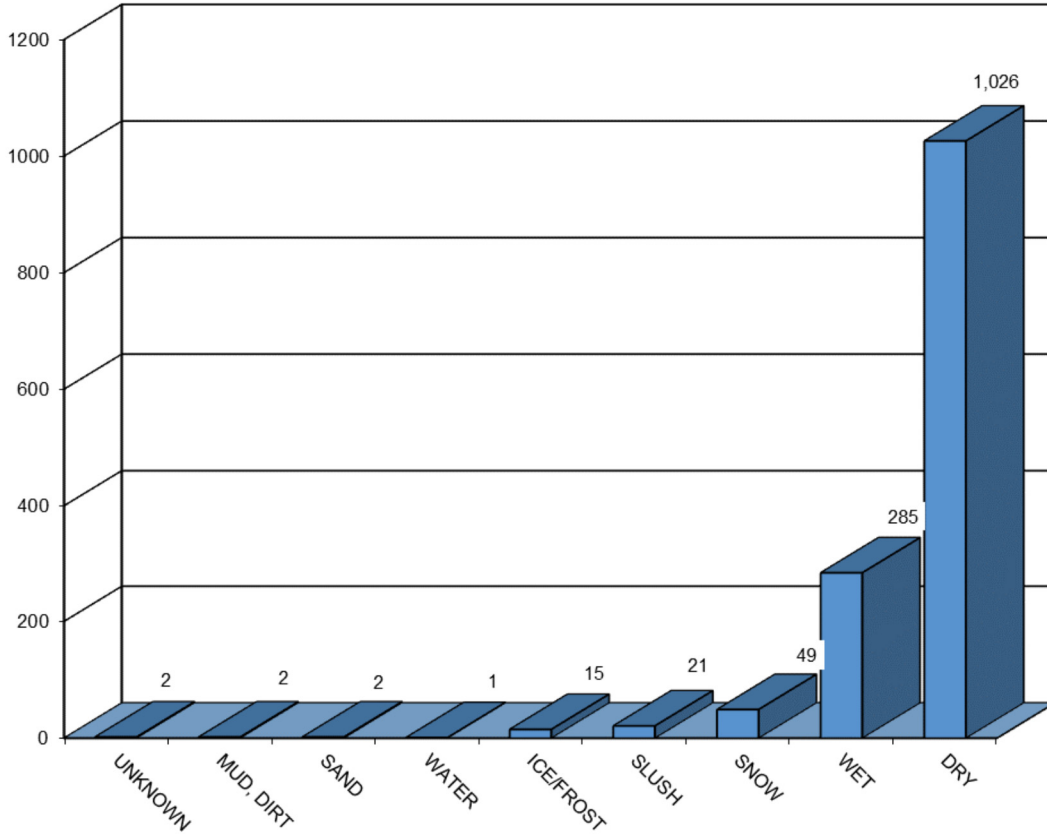
MAINE HIGHWAY PEDESTRIAN CRASHES BY WEATHER CONDITIONS 2015 - 2019



WEATHER CONDITIONS	2015	2016	2017	2018	2019	FIVE YEAR TOTAL
BLOWING SAND, SOIL, DIRT	0	0	0	0	0	0
SEVERE CROSS WINDS	0	0	1	0	1	2
SLEET, HAIL (freezing rain or drizzle)	1	2	2	2	4	11
OTHER	0	0	0	0	0	0
FOG, SMOG, SMOKE	4	1	2	2	2	11
SNOW	7	5	7	7	7	33
BLOWING SNOW	1	0	2	0	0	3
RAIN	29	39	35	36	40	179
CLOUDY	34	28	25	43	40	170
CLEAR	217	192	209	172	204	994
TOTAL	293	267	283	262	298	1,403



MAINE HIGHWAY PEDESTRIAN CRASHES BY ROAD SURFACE CONDITIONS 2015 - 2019



ROAD SURFACE CONDITIONS	2015	2016	2017	2018	2019	FIVE YEAR TOTAL
UNKNOWN	0	0	1	1	0	2
OTHER	0	0	0	0	0	0
OIL	0	0	0	0	0	0
MUD, DIRT	0	0	0	1	1	2
SAND	0	0	2	0	0	2
WATER (standing, moving)	0	1	0	0	0	1
ICE/FROST	4	2	4	1	4	15
SLUSH	4	2	5	6	4	21
SNOW	12	6	13	11	7	49
WET	53	54	49	60	69	285
DRY	220	202	209	182	213	1,026
TOTAL	293	267	283	262	298	1,403





STATE OF MAINE
HIGHWAY BICYCLE CRASHES
2015 - 2019

I. PREFACE i

II. BICYCLE CRASH TABLES AND CHARTS 2015-2019

Crashes Summarized by:

County 1-4

Severity 5-6

Rural/Urban Designation 7

Month 8

Day of Week 9

Time of Day 10

Age Groups 11

Age Groups by Gender 12

Apparent Physical Condition 13

Contributing Factors 14

Vehicle Type 15

Light Conditions 16

Weather Conditions 17

STATE OF MAINE

HIGHWAY BICYCLE CRASHES

2015 - 2019

Preface

This publication is a statistical review of reported motor vehicle highway crashes that involved bicycles in Maine during the five-year study period 2015- 2019. The statistics are compiled from crash reports submitted to the Department of Transportation by the Traffic Division, Department of Public Safety. The Traffic Division receives all police uniform crash reports Form 13:20 A, from state, county and local police agencies.

The enclosed charts, graphs, listings and summaries were produced using the Department of Transportation's Computerized Crash Records System. Fatalities data was provided by the Department of Public Safety. Except for adjustments to locations and crash-type information for accuracy, no attempt has been made to modify the raw data received from the reporting agencies. However, because crash scenes are often dangerous and chaotic, some inaccuracies in data collection are possible.

A comparison of this report with other summaries of crashes and fatalities may also reveal inconsistencies due to changes in crash classification, late submittals, and differing reporting criteria. Fatalities data is provided by the Department of Public Safety and does not include deaths that were later determined to be of natural causes.

The Department of Transportation and the Department of Public Safety wish to express our sincere thank you to all law enforcement agencies and officers for the work they do on crash investigations. Without their dedication, this report would not be possible.

A link to this publication can be found on the maine.gov website at:

mainedot.gov/safety/crash-data/

We welcome your comments and suggestions on this report at:

Maine Department of Transportation
Office of Safety
Crash Records Section
16 State House Station
Augusta, ME 04333-0016
Tel: 207-624-3616



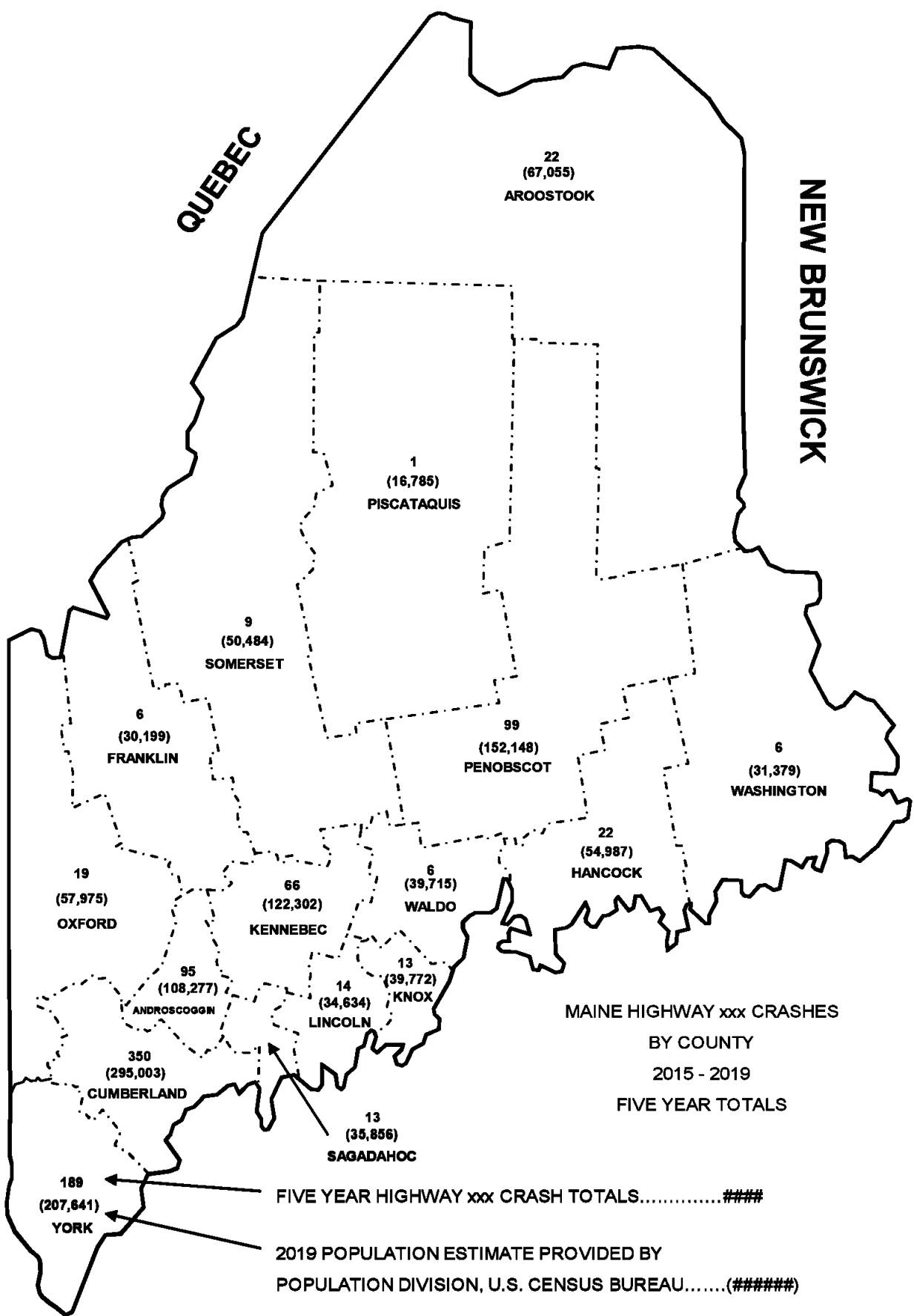




NEW HAMPSHIRE

QUEBEC

NEW BRUNSWICK



**MAINE HIGHWAY xxx CRASHES
BY COUNTY
2015 - 2019
FIVE YEAR TOTALS**

FIVE YEAR HIGHWAY xxx CRASH TOTALS.....#####

**2019 POPULATION ESTIMATE PROVIDED BY
POPULATION DIVISION, U.S. CENSUS BUREAU.....(#####)**

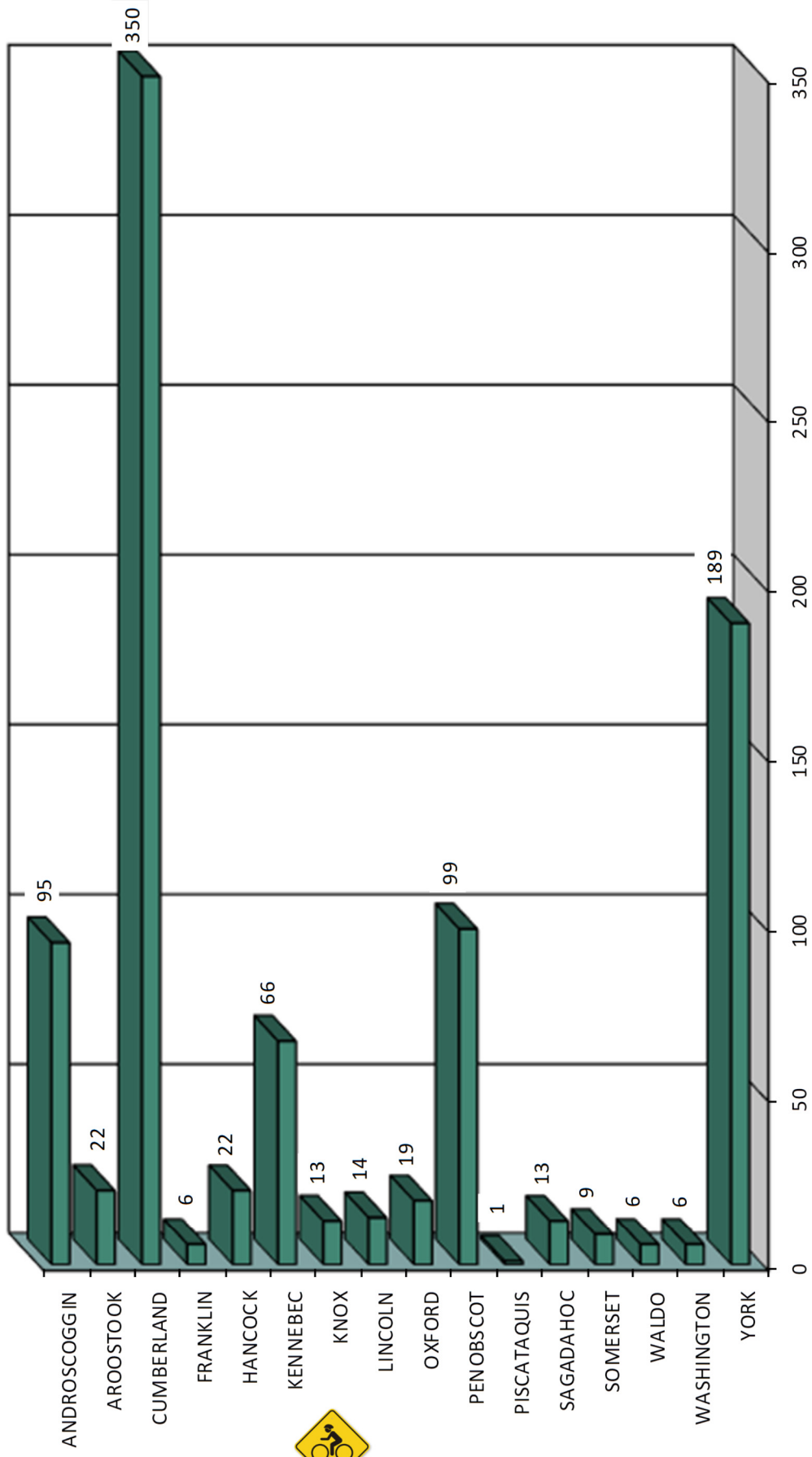
Produced by the Maine Department of Transportation



MAINE HIGHWAY BICYCLE CRASHES

BY COUNTY

2015 - 2019



MAINE HIGHWAY BICYCLE CRASH SEVERITY BY COUNTY 2015- 2019

COUNTY	INJURY TYPE	2015	2016	2017	2018	2019	TOTAL CRASHES	PERCENT OF TOTAL
ANDROSCOGGIN Percent Personal Injury 93.68%	FATAL (K)	0	1	0	0	0	1	0.11%
	SUSPECTED SERIOUS (A)	2	4	2	5	0	13	1.40%
	SUSPECTED MINOR (B)	5	8	7	2	12	34	3.66%
	POSSIBLE INJURY (C)	7	10	11	4	9	41	4.41%
	PROPERTY DAMAGE ONLY (O)	2	1	0	1	2	6	0.65%
	COUNTY SUBTOTAL		16	24	20	12	23	95
AROOSTOOK Percent Personal Injury 90.91%	FATAL (K)	0	0	0	0	0	0	0.00%
	SUSPECTED SERIOUS (A)	1	0	0	0	1	2	0.22%
	SUSPECTED MINOR (B)	3	4	1	0	3	11	1.18%
	POSSIBLE INJURY (C)	1	1	1	4	0	7	0.75%
	PROPERTY DAMAGE ONLY (O)	1	0	1	0	0	2	0.22%
	COUNTY SUBTOTAL		6	5	3	4	4	22
CUMBERLAND Percent Personal Injury 91.71%	FATAL (K)	0	1	0	0	1	2	0.22%
	SUSPECTED SERIOUS (A)	6	5	7	6	5	29	3.12%
	SUSPECTED MINOR (B)	27	30	18	19	27	121	13.01%
	POSSIBLE INJURY (C)	39	36	35	24	35	169	18.17%
	PROPERTY DAMAGE ONLY (O)	5	8	4	8	4	29	3.12%
	COUNTY SUBTOTAL		77	80	64	57	72	350
FRANKLIN Percent Personal Injury 83.33%	FATAL (K)	0	0	0	0	0	0	0.00%
	SUSPECTED SERIOUS (A)	0	0	1	0	0	1	0.11%
	SUSPECTED MINOR (B)	0	1	0	1	1	3	0.32%
	POSSIBLE INJURY (C)	0	0	1	0	0	1	0.11%
	PROPERTY DAMAGE ONLY (O)	1	0	0	0	0	1	0.11%
	COUNTY SUBTOTAL		1	1	2	1	1	6
HANCOCK Percent Personal Injury 100.00%	FATAL (K)	0	0	0	0	0	0	0.00%
	SUSPECTED SERIOUS (A)	1	1	1	0	0	3	0.32%
	SUSPECTED MINOR (B)	1	2	2	4	2	11	1.18%
	POSSIBLE INJURY (C)	3	3	0	2	0	8	0.86%
	PROPERTY DAMAGE ONLY (O)	0	0	0	0	0	0	0.00%
	COUNTY SUBTOTAL		5	6	3	6	2	22
KENNEBEC Percent Personal Injury 90.91%	FATAL (K)	0	1	0	0	0	1	0.11%
	SUSPECTED SERIOUS (A)	0	3	0	2	1	6	0.65%
	SUSPECTED MINOR (B)	4	6	7	3	2	22	2.37%
	POSSIBLE INJURY (C)	6	7	9	7	2	31	3.33%
	PROPERTY DAMAGE ONLY (O)	1	2	0	3	0	6	0.65%
	COUNTY SUBTOTAL		11	19	16	15	5	66
KNOX Percent Personal Injury 100.00%	FATAL (K)	0	0	0	0	0	0	0.00%
	SUSPECTED SERIOUS (A)	0	0	2	0	1	3	0.32%
	SUSPECTED MINOR (B)	3	0	0	0	2	5	0.54%
	POSSIBLE INJURY (C)	0	1	0	2	2	5	0.54%
	PROPERTY DAMAGE ONLY (O)	0	0	0	0	0	0	0.00%
	COUNTY SUBTOTAL		3	1	2	2	5	13
LINCOLN Percent Personal Injury 100.00%	FATAL (K)	0	0	0	1	0	1	0.11%
	SUSPECTED SERIOUS (A)	0	0	1	1	0	2	0.22%
	SUSPECTED MINOR (B)	2	1	1	1	2	7	0.75%
	POSSIBLE INJURY (C)	0	1	0	2	1	4	0.43%
	PROPERTY DAMAGE ONLY (O)	0	0	0	0	0	0	0.00%
	COUNTY SUBTOTAL		2	2	2	5	3	14

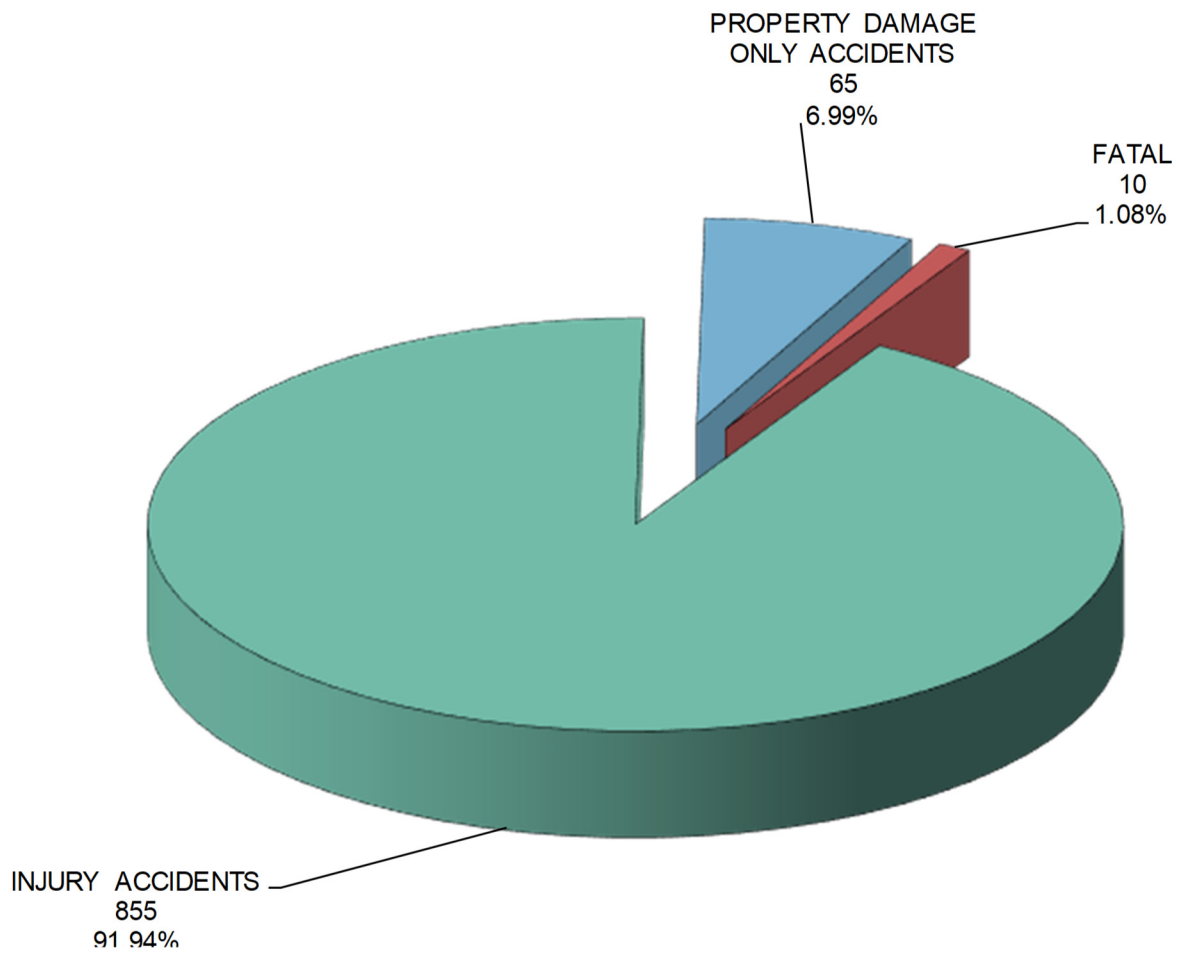


COUNTY	INJURY TYPE	2015	2016	2017	2018	2019	TOTAL CRASHES	PERCENT OF TOTAL
OXFORD Percent Personal Injury 100.00%	FATAL (K)	0	1	0	0	1	2	0.22%
	SUSPECTED SERIOUS (A)	1	0	1	0	0	2	0.22%
	SUSPECTED MINOR (B)	1	2	2	1	3	9	0.97%
	POSSIBLE INJURY (C)	1	1	1	3	0	6	0.65%
	PROPERTY DAMAGE ONLY (O)	0	0	0	0	0	0	0.00%
	COUNTY SUBTOTAL	3	4	4	4	4	19	2.04%
PENOBSCOT Percent Personal Injury 89.90%	FATAL (K)	0	0	0	0	0	0	0.00%
	SUSPECTED SERIOUS (A)	1	1	4	0	1	7	0.75%
	SUSPECTED MINOR (B)	4	3	12	8	8	35	3.76%
	POSSIBLE INJURY (C)	12	10	12	4	9	47	5.05%
	PROPERTY DAMAGE ONLY (O)	3	3	1	2	1	10	1.08%
	COUNTY SUBTOTAL	20	17	29	14	19	99	10.65%
PISCATAQUIS Percent Personal Injury 100.00%	FATAL (K)	0	0	0	0	0	0	0.00%
	SUSPECTED SERIOUS (A)	0	0	0	1	0	1	0.11%
	SUSPECTED MINOR (B)	0	0	0	0	0	0	0.00%
	POSSIBLE INJURY (C)	0	0	0	0	0	0	0.00%
	PROPERTY DAMAGE ONLY (O)	0	0	0	0	0	0	0.00%
	COUNTY SUBTOTAL	0	0	0	1	0	1	0.11%
SAGadahoc Percent Personal Injury 100.00%	FATAL (K)	0	0	0	0	0	0	0.00%
	SUSPECTED SERIOUS (A)	0	0	1	0	1	2	0.22%
	SUSPECTED MINOR (B)	2	1	1	1	0	5	0.54%
	POSSIBLE INJURY (C)	2	1	1	1	1	6	0.65%
	PROPERTY DAMAGE ONLY (O)	0	0	0	0	0	0	0.00%
	COUNTY SUBTOTAL	4	2	3	2	2	13	1.40%
SOMERSET Percent Personal Injury 88.89%	FATAL (K)	0	0	0	0	0	0	0.00%
	SUSPECTED SERIOUS (A)	0	0	0	0	1	1	0.11%
	SUSPECTED MINOR (B)	0	0	1	0	0	1	0.11%
	POSSIBLE INJURY (C)	2	0	2	1	1	6	0.65%
	PROPERTY DAMAGE ONLY (O)	0	0	0	1	0	1	0.11%
	COUNTY SUBTOTAL	2	0	3	2	2	9	0.97%
WALDO Percent Personal Injury 83.33%	FATAL (K)	0	0	0	1	0	1	0.11%
	SUSPECTED SERIOUS (A)	1	0	0	0	0	1	0.11%
	SUSPECTED MINOR (B)	0	0	0	0	0	0	0.00%
	POSSIBLE INJURY (C)	0	0	1	1	1	3	0.32%
	PROPERTY DAMAGE ONLY (O)	0	0	0	1	0	1	0.11%
	COUNTY SUBTOTAL	1	0	1	3	1	6	0.65%
WASHINGTON Percent Personal Injury 83.33%	FATAL (K)	0	0	0	0	0	0	0.00%
	SUSPECTED SERIOUS (A)	0	0	0	1	1	2	0.22%
	SUSPECTED MINOR (B)	1	0	0	0	0	1	0.11%
	POSSIBLE INJURY (C)	0	0	1	0	1	2	0.22%
	PROPERTY DAMAGE ONLY (O)	0	0	1	0	0	1	0.11%
	COUNTY SUBTOTAL	1	0	2	1	2	6	0.65%
YORK Percent Personal Injury 95.77%	FATAL (K)	0	0	2	0	0	2	0.22%
	SUSPECTED SERIOUS (A)	6	9	1	3	0	19	2.04%
	SUSPECTED MINOR (B)	15	20	12	15	15	77	8.28%
	POSSIBLE INJURY (C)	14	19	16	18	16	83	8.92%
	PROPERTY DAMAGE ONLY (O)	2	0	2	3	1	8	0.86%
	COUNTY SUBTOTAL	37	48	33	39	32	189	20.32%
COUNTY GRAND TOTAL Percent Personal Injury 93.01%	FATAL (K)	0	4	2	2	2	10	1.08%
	SUSPECTED SERIOUS (A)	19	23	21	19	12	94	10.11%
	SUSPECTED MINOR (B)	68	78	64	55	77	342	36.77%
	POSSIBLE INJURY (C)	87	90	91	73	78	419	45.05%
	PROPERTY DAMAGE ONLY (O)	15	14	9	19	8	65	6.99%
	GRAND TOTAL	189	209	187	168	177	930	100.00%

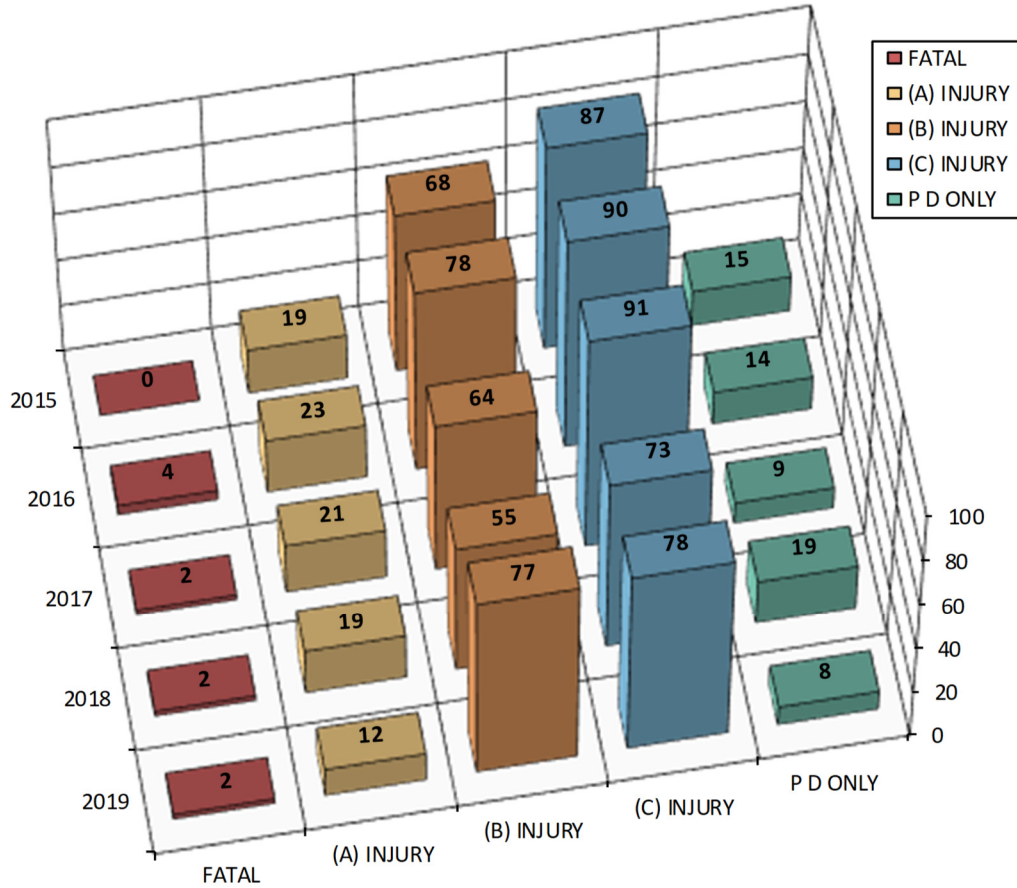


MAINE HIGHWAY BICYCLE CRASHES 2015 - 2019

930 Total Bicycle Crashes



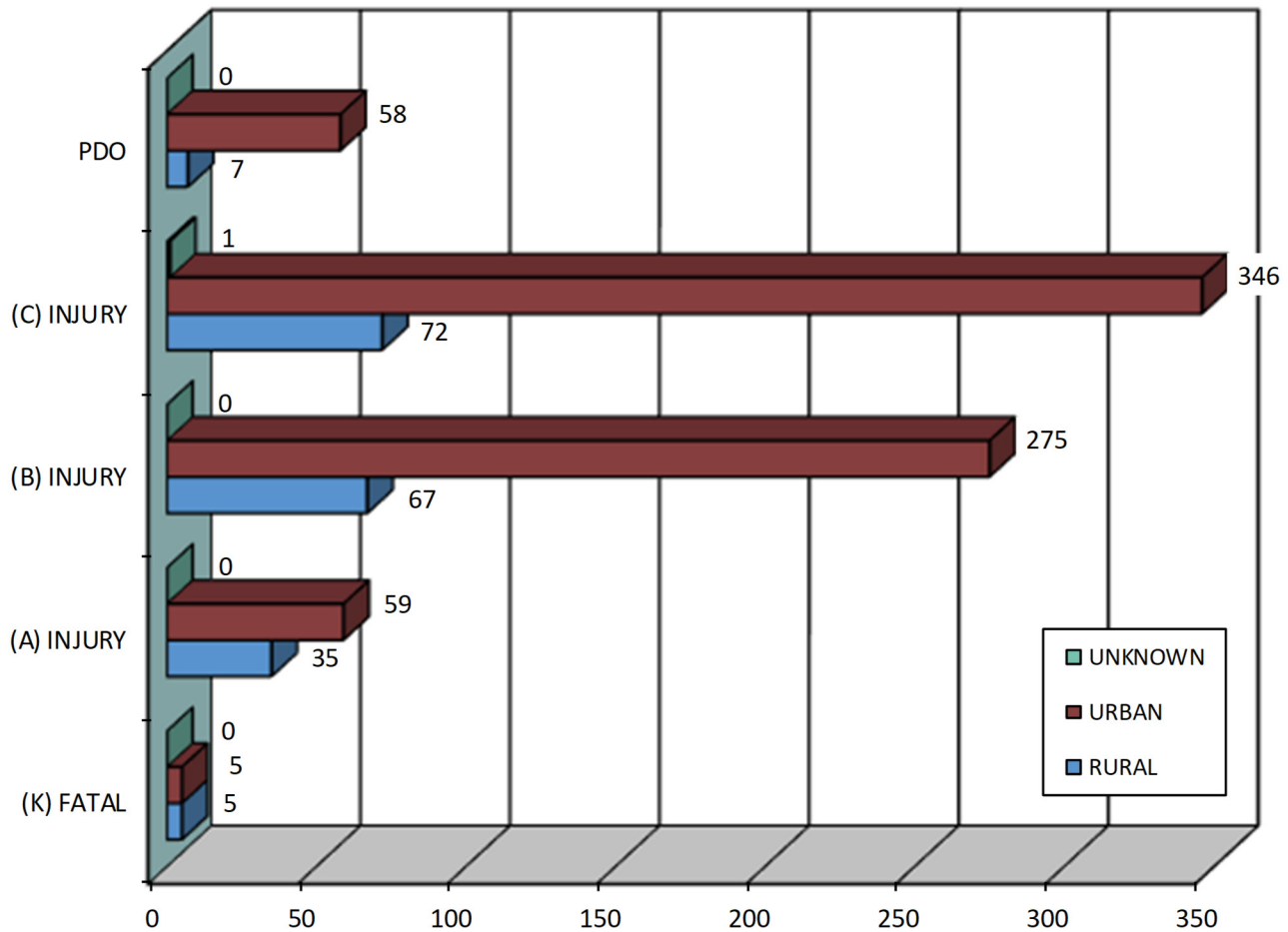
MAINE HIGHWAY BICYCLE CRASH SEVERITY BY YEAR 2015 - 2019



YEAR	FATAL CRASH (K)	SUSPECTED SERIOUS INJURY (A)	SUSPECTED MINOR INJURY (B)	POSSIBLE INJURY (C)	PROPERTY DAMAGE ONLY (O)	TOTAL CRASHES
2015	0	19	68	87	15	189
2016	4	23	78	90	14	209
2017	2	21	64	91	9	187
2018	2	19	55	73	19	168
2019	2	12	77	78	8	177
TOTAL	10	94	342	419	65	930
PERCENT	1.08%	PERCENT INJURY CRASHES =		91.94%	6.99%	100.00%



MAINE HIGHWAY BICYCLE CRASH SEVERITY BY RURAL URBAN DESIGNATION 2015 - 2019



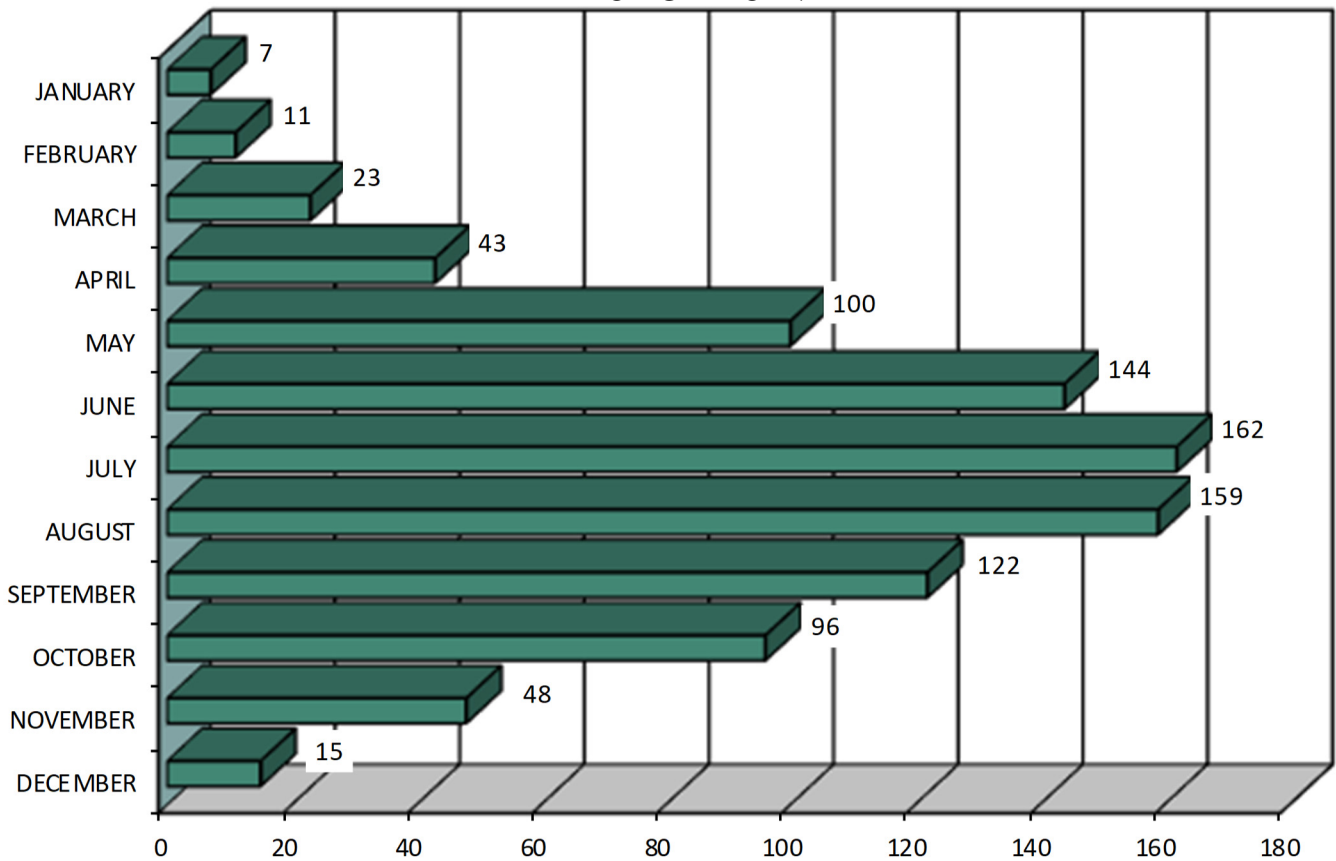
RURAL URBAN DESIGNATION	FATAL CRASH (K)	SUSPECTED SERIOUS INJURY (A)	SUSPECTED MINOR INJURY (B)	POSSIBLE INJURY (C)	PROPERTY DAMAGE ONLY (PDO)	FIVE YEAR TOTAL
RURAL	5	35	67	72	7	186
URBAN	5	59	275	346	58	743
UNKNOWN	0	0	0	1	0	1
TOTAL	10	94	342	419	65	930



MAINE HIGHWAY BICYCLE CRASHES

BY MONTH

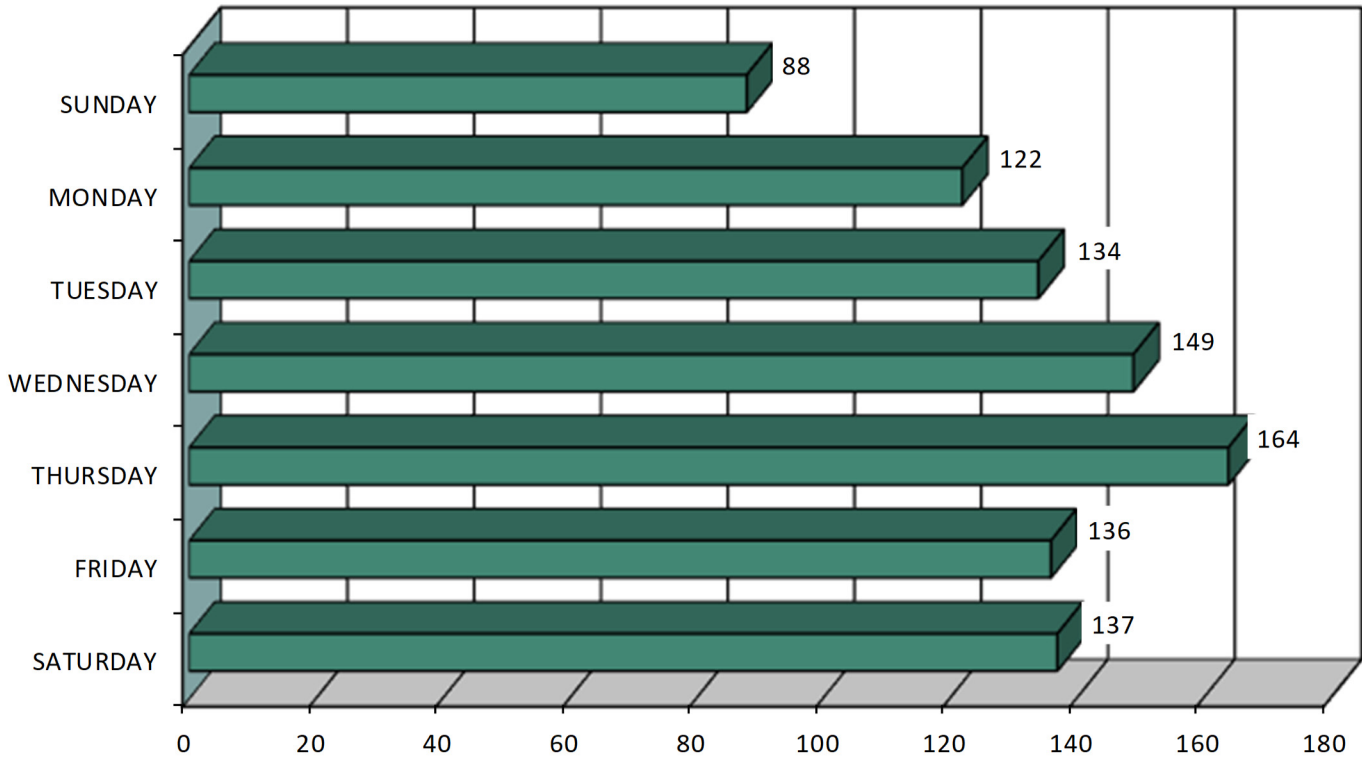
2015- 2019



MONTH	2015	2016	2017	2018	2019	FIVE YEAR TOTAL	PERCENT OF TOTAL
JANUARY	3	1	2	1	0	7	0.75%
FEBRUARY	0	5	4	0	2	11	1.18%
MARCH	5	8	2	4	4	23	2.47%
APRIL	9	9	9	8	8	43	4.62%
MAY	20	23	22	20	15	100	10.75%
JUNE	30	28	26	27	33	144	15.48%
JULY	36	36	33	22	35	162	17.42%
AUGUST	31	32	31	37	28	159	17.10%
SEPTEMBER	22	33	25	21	21	122	13.12%
OCTOBER	19	18	25	19	15	96	10.32%
NOVEMBER	10	13	6	6	13	48	5.16%
DECEMBER	4	3	2	3	3	15	1.61%
TOTAL	189	209	187	168	177	930	100.00%



MAINE HIGHWAY BICYCLE CRASHES BY DAY OF THE WEEK 2015 - 2019

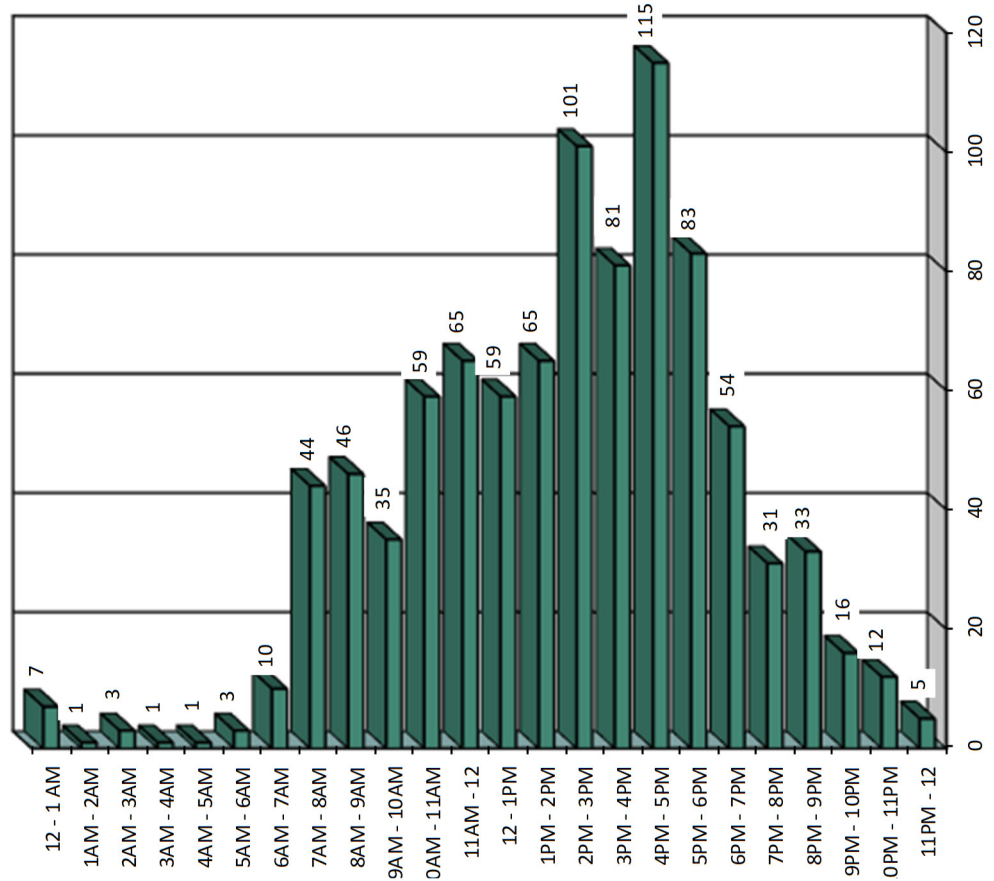


DAY OF THE WEEK	2015	2016	2017	2018	2019	FIVE YEAR TOTAL	PERCENT OF TOTAL
SUNDAY	14	23	20	24	7	88	9.46%
MONDAY	26	29	20	23	24	122	13.12%
TUESDAY	25	34	36	15	24	134	14.41%
WEDNESDAY	28	30	29	30	32	149	16.02%
THURSDAY	33	41	35	25	30	164	17.63%
FRIDAY	30	25	21	31	29	136	14.62%
SATURDAY	33	27	26	20	31	137	14.73%
TOTAL	189	209	187	168	177	930	100.00%

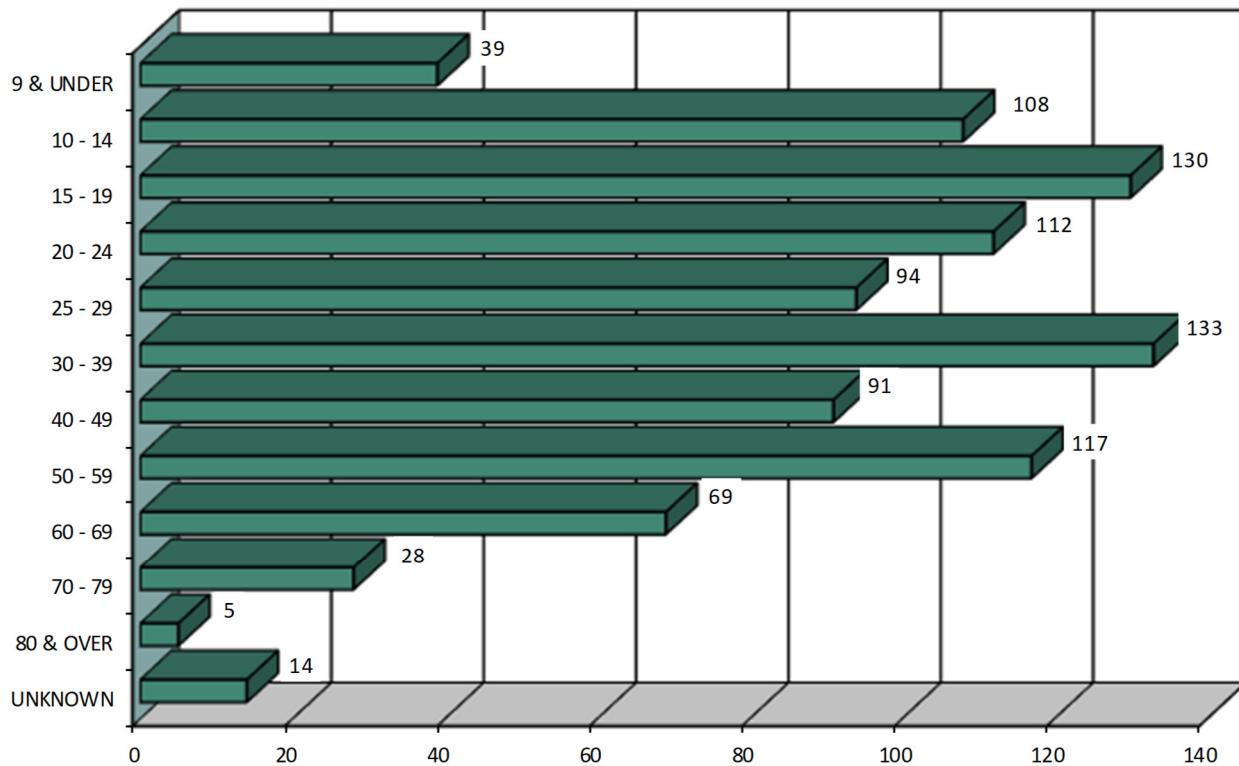


MAINE HIGHWAY BICYCLE CRASHES BY TIME OF DAY 2015 - 2019

TIME OF DAY	2015	2016	2017	2018	2019	FIVE YEAR TOTAL
12 - 1 AM	1	3	1	1	1	7
1AM - 2AM	0	0	0	1	0	1
2AM - 3AM	1	1	0	1	0	3
3AM - 4AM	1	0	0	0	0	1
4AM - 5AM	0	0	0	0	1	1
5AM - 6AM	0	1	1	0	1	3
6AM - 7AM	2	1	3	2	2	10
7AM - 8AM	4	9	10	13	8	44
8AM - 9AM	10	7	13	9	7	46
9AM - 10AM	11	3	8	2	11	35
10AM - 11AM	13	12	9	16	9	59
11AM - 12	16	12	8	12	17	65
12 - 1PM	9	15	14	9	12	59
1PM - 2PM	13	20	9	14	9	65
2PM - 3PM	24	19	22	18	18	101
3PM - 4PM	13	18	18	15	17	81
4PM - 5PM	22	20	21	23	29	115
5PM - 6PM	20	24	17	9	13	83
6PM - 7PM	8	15	14	8	9	54
7PM - 8PM	7	10	7	7	0	31
8PM - 9PM	8	10	4	5	6	33
9PM - 10PM	3	4	3	2	4	16
10PM - 11PM	2	5	3	0	2	12
11PM - 12	1	0	2	1	1	5
TOTAL	189	209	187	168	177	930



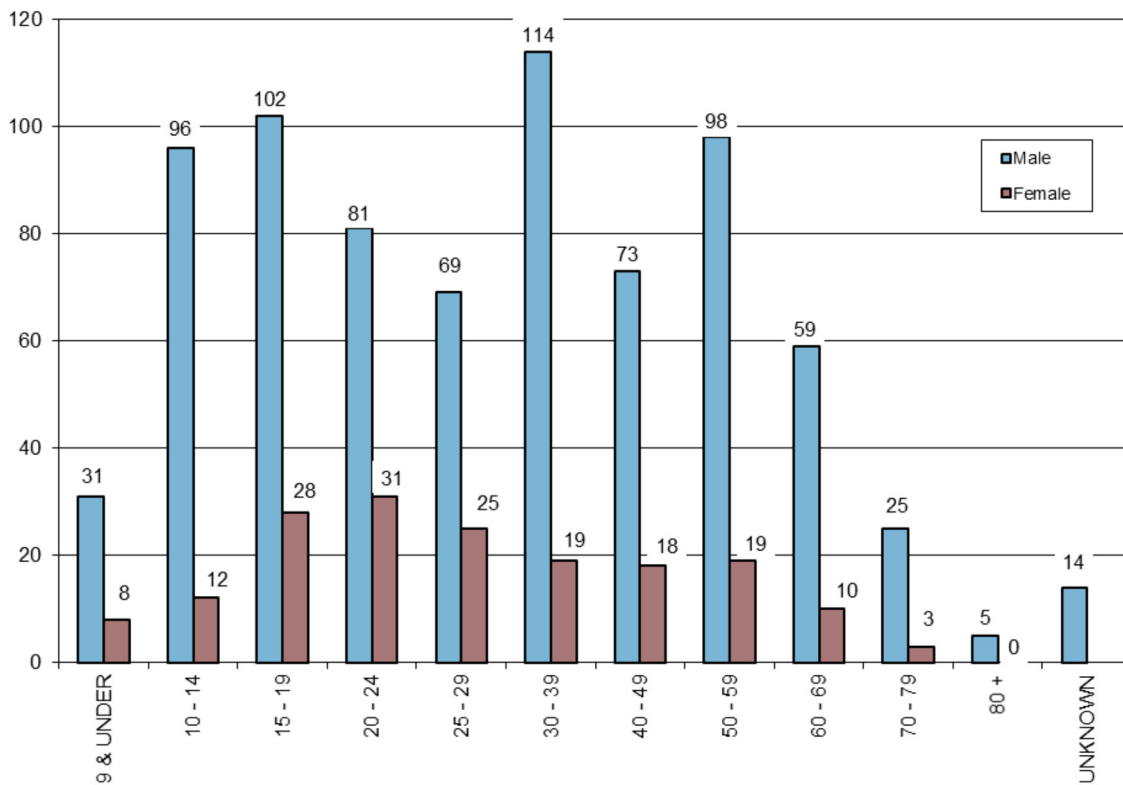
BICYCLISTS INVOLVED IN MAINE HIGHWAY CRASHES BY AGE GROUP 2015 - 2019



AGE OF BICYCLIST	2015	2016	2017	2018	2019	FIVE YEAR TOTAL	PERCENT OF TOTAL
9 & UNDER	10	7	7	8	7	39	4.15%
10 - 14	25	21	30	15	17	108	11.49%
15 - 19	26	32	21	25	26	130	13.83%
20 - 24	17	34	25	21	15	112	11.91%
25 - 29	19	19	20	18	18	94	10.00%
30 - 39	26	25	18	34	30	133	14.15%
40 - 49	19	18	20	15	19	91	9.68%
50 - 59	26	24	27	20	20	117	12.45%
60 - 69	12	19	16	8	14	69	7.34%
70 - 79	8	5	3	5	7	28	2.98%
80 & OVER	0	3	1	0	1	5	0.53%
UNKNOWN	3	5	2	1	3	14	1.49%
TOTAL	191	212	190	170	177	940	100.00%



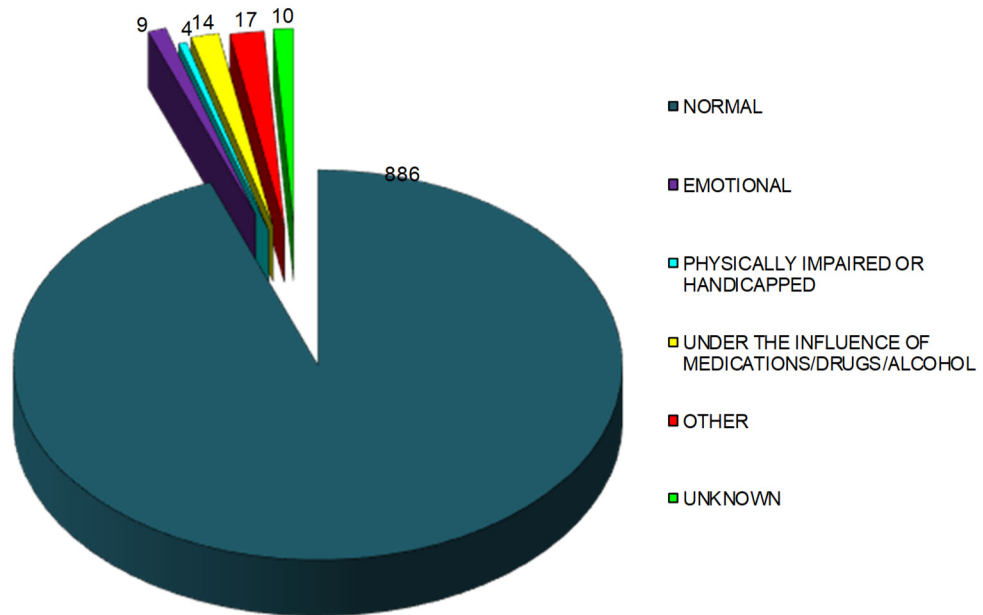
BICYCLISTS INVOLVED IN MAINE HIGHWAY CRASHES BY AGE GROUP AND GENDER 2015 - 2019



AGE GROUP OF BICYCLIST BY GENDER	2015		2016		2017		2018		2019		TOTALS		FIVE YEAR TOTAL	PERCENT OF TOTAL
	M	F	M	F	M	F	M	F	M	F	M	F		
9 & UNDER	6	4	6	1	6	1	6	2	7	0	31	8	39	4.15%
10 - 14	21	4	20	1	26	4	14	1	15	2	96	12	108	11.49%
15 - 19	18	8	27	5	18	3	18	7	21	5	102	28	130	13.83%
20 - 24	15	2	23	11	16	9	17	4	10	5	81	31	112	11.91%
25 - 29	15	4	12	7	14	6	14	4	14	4	69	25	94	10.00%
30 - 39	24	2	23	2	15	3	25	9	27	3	114	19	133	14.15%
40 - 49	15	4	14	4	17	3	12	3	15	4	73	18	91	9.68%
50 - 59	19	7	22	2	22	5	17	3	18	2	98	19	117	12.45%
60 - 69	11	1	17	2	12	4	7	1	12	2	59	10	69	7.34%
70 - 79	7	1	3	2	3	0	5	0	7	0	25	3	28	2.98%
80 & OVER	0	0	3	0	1	0	0	0	1	0	5	0	5	0.53%
UNKNOWN	3		5		2		1		3		14		14	1.49%
TOTAL BY GENDER	151	37	170	37	150	38	135	34	147	27	753	173		
TOTAL	191		212		190		170		177		940		940	100.00%



MAINE HIGHWAY BICYCLE CRASHES BY APPARENT PHYSICAL CONDITIONS 2015 - 2019



BICYCLIST PHYSICAL CONDITION	2015	2016	2017	2018	2019	FIVE YEAR TOTAL	PERCENT OF TOTAL
APPARENTLY NORMAL	181	200	179	157	169	886	94.26%
ASLEEP OR FATIGUED	0	0	0	0	0	0	0.00%
EMOTIONAL (depressed, angry, disturbed, etc.)	1	1	1	4	2	9	0.96%
ILL (sick)	0	0	0	0	0	0	0.00%
PHYSICALLY IMPAIRED OR HANDICAPPED	1	1	0	2	0	4	0.43%
UNDER THE INFLUENCE OF MEDICATIONS/DRUGS/ALCOHOL	2	5	4	0	3	14	1.49%
OTHER	1	2	6	5	3	17	1.81%
UNKNOWN	5	3	0	2	0	10	1.06%
TOTAL	191	212	190	170	177	940	100.00%



CONTRIBUTING FACTORS TO MAINE HIGHWAY BICYCLE CRASHES 2015 - 2019

DRIVER ACTIONS (actions 1 & 2 combined)	2015	2016	2017	2018	2019	Totals
NO CONTRIBUTING ACTION	87	107	85	85	88	452
RAN OFF ROADWAY	2	1	3	0	0	6
FAILED TO YIELD RIGHT-OF-WAY	50	60	52	47	61	270
RAN RED LIGHT	0	0	1	0	0	1
RAN STOP SIGN	1	3	0	0	0	4
DISREGARDED OTHER TRAFFIC SIGN	1	1	0	0	1	3
DISREGARDED OTHER ROAD MARKINGS	1	0	0	0	0	1
EXCEEDED POSTED SPEED LIMIT	1	2	0	0	0	3
DROVE TOO FAST FOR CONDITIONS	1	0	1	0	1	3
IMPROPER TURN	11	9	6	6	7	39
IMPROPER BACKING	0	2	2	1	0	5
IMPROPER PASSING	2	3	2	0	4	11
WRONG WAY	0	0	0	1	0	1
FOLLOWED TOO CLOSELY	2	0	1	2	2	7
FAILED TO KEEP IN PROPER LANE	3	2	3	2	2	12
OPERATED MOTOR VEHICLE IN ERRATIC, RECKLESS, CARELESS, NEGLIGENT OR AGGRESSIVE MANNER	2	5	7	4	3	21
SWERVED OR AVOIDED DUE TO WIND, SLIPPERY SURFACE, MOTOR VEHICLE, OBJECT, NON-MOTORIST IN ROADWAY	1	1	0	1	1	4
OVER-CORRECTING/OVER-STEERING	0	0	0	0	0	0
OTHER CONTRIBUTING ACTION	13	8	7	10	12	50
UNKNOWN	14	7	7	19	4	51
TOTALS	192	211	177	178	186	944
BICYCLIST ACTIONS						
RIDING WITH TRAFFIC	77	77	67	72	79	372
RIDING AGAINST TRAFFIC	21	39	38	29	28	155
MAKING RIGHT TURN	3	3	4	1	1	12
MAKING LEFT TURN	8	12	8	8	6	42
MAKING U TURN	0	2	0	1	0	3
RIDING ACROSS ROAD	46	47	50	32	42	217
SLOWING, STOPPING, STARTING IN ROAD	4	2	6	4	0	16
OTHER BYCLIST ACTION	19	16	15	16	14	80
UNKNOWN	3	4	2	7	7	23
TOTALS	181	202	190	170	177	920
VEHICULAR FACTORS						
NONE	172	193	170	158	165	858
BRAKES	0	1	0	1	1	3
EXHAUST SYSTEM	0	1	0	0	0	1
BODY, DOORS	1	0	1	1	0	3
STEERING	0	0	0	0	1	1
POWER TRAIN	0	0	0	0	0	0
SUSPENSION	0	0	0	0	0	0
TIRES	0	0	0	0	0	0
WHEELS	0	0	0	0	0	0
LIGHTS (head, signal, tail, brake)	0	0	0	0	0	0
WINDOWS/WINDSHIELD	0	0	0	0	0	0
MIRRORS	0	0	0	0	0	0
WIPERS	0	0	0	0	0	0
TRUCK COUPLING/TRAILER HITCH/SAFETY CHAINS	0	0	0	0	0	0
OTHER	1	2	0	0	2	5
TOTALS	174	197	171	160	169	871

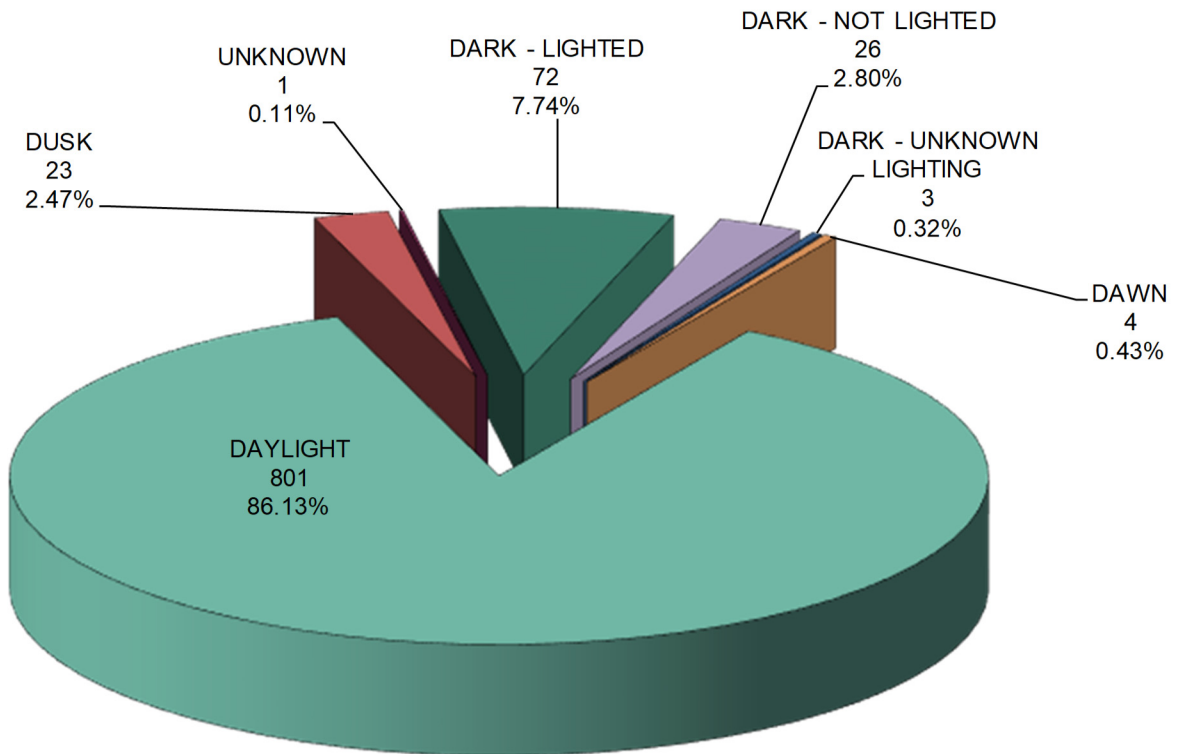


VEHICLES INVOLVED IN
MAINE HIGHWAY BICYCLE CRASHES
2015 - 2019

VEHICLE TYPE INVOLVED IN BICYCLE CRASHES	2015	2016	2017	2018	2019	FIVE YEAR TOTAL
PASSENGER CAR	105	123	117	100	92	537
(SPORT) UTILITY VEHICLE	38	31	31	27	40	167
PASSENGER VAN	7	10	4	3	1	25
CARGO VAN (10k or less)	1	3	3	2	4	13
PICKUP TRUCK	22	31	20	26	33	132
MOTOR HOME	0	1	0	0	0	1
SCHOOL BUS	1	0	0	0	1	2
TRANSIT BUS	0	0	0	0	1	1
MOTOR COACH	0	0	0	0	0	0
OTHER BUS	0	0	0	0	1	1
MOTORCYCLE	4	3	1	2	1	11
MOPED	0	0	0	0	0	0
LOW SPEED VEHICLE	0	0	0	0	0	0
AUTOCYCLE	0	0	0	0	0	0
EXPERIMENTAL	0	0	0	0	0	0
OTHER LIGHT TRUCK (10,000 lbs or less)	1	0	0	2	0	3
MEDIUM /HEAVY TRUCKS (more than 10,000 lbs)	2	2	4	1	1	10
ATV (2,3,4-WHEEL)	0	0	0	0	0	0
SNOWMOBILE	0	0	0	0	0	0
PEDESTRIAN	1	1	1	0	1	4
BICYCLE	191	212	190	170	177	940
OTHER	5	5	1	2	4	17
TOTAL VEHICLES INVOLVED	378	422	372	335	357	1,864



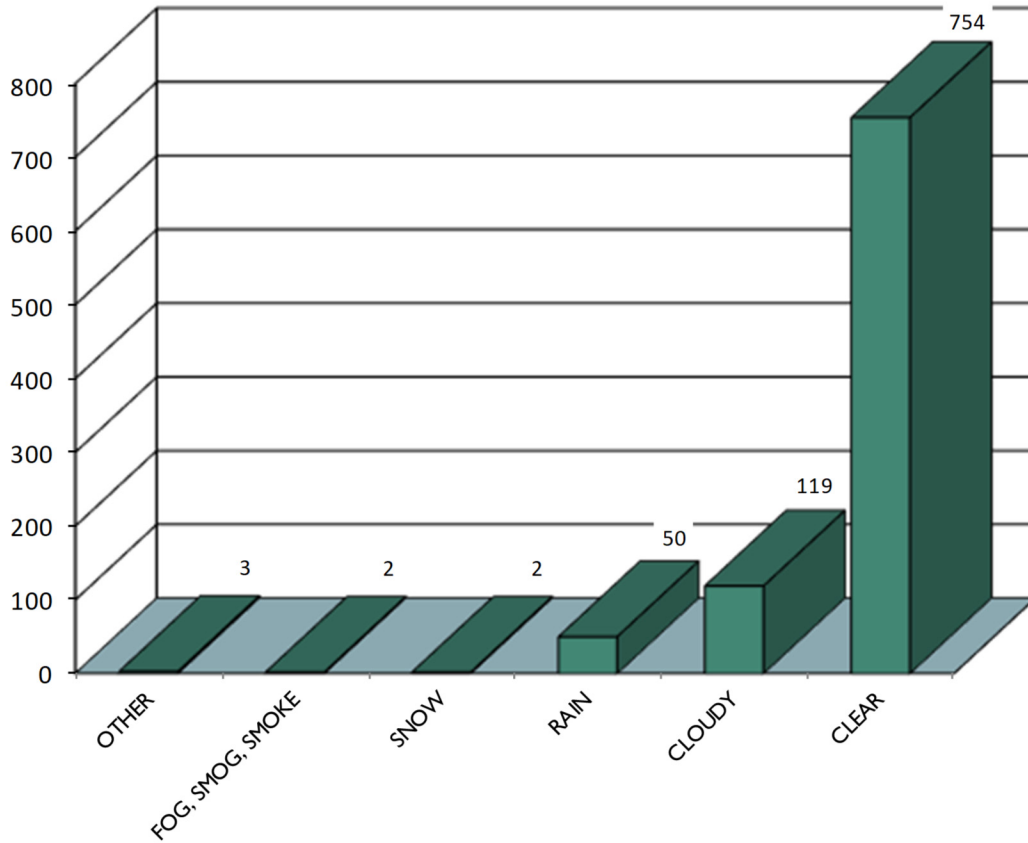
MAINE HIGHWAY BICYCLE CRASHES BY LIGHT CONDITION 2015 - 2019



LIGHT CONDITION	2015	2016	2017	2018	2019	FIVE YEAR TOTAL	PERCENT OF TOTAL
Dark - Lighted	17	27	5	6	17	72	7.74%
Dark - Not Lighted	3	5	11	5	2	26	2.80%
Dark - Unknown Lighting	2	0	1	0	0	3	0.32%
Dawn	0	0	1	0	3	4	0.43%
Daylight	164	171	164	153	149	801	86.13%
Dusk	3	6	5	3	6	23	2.47%
Unknown	0	0	0	1	0	1	0.11%
Grand Total	189	209	187	168	177	930	100.00%



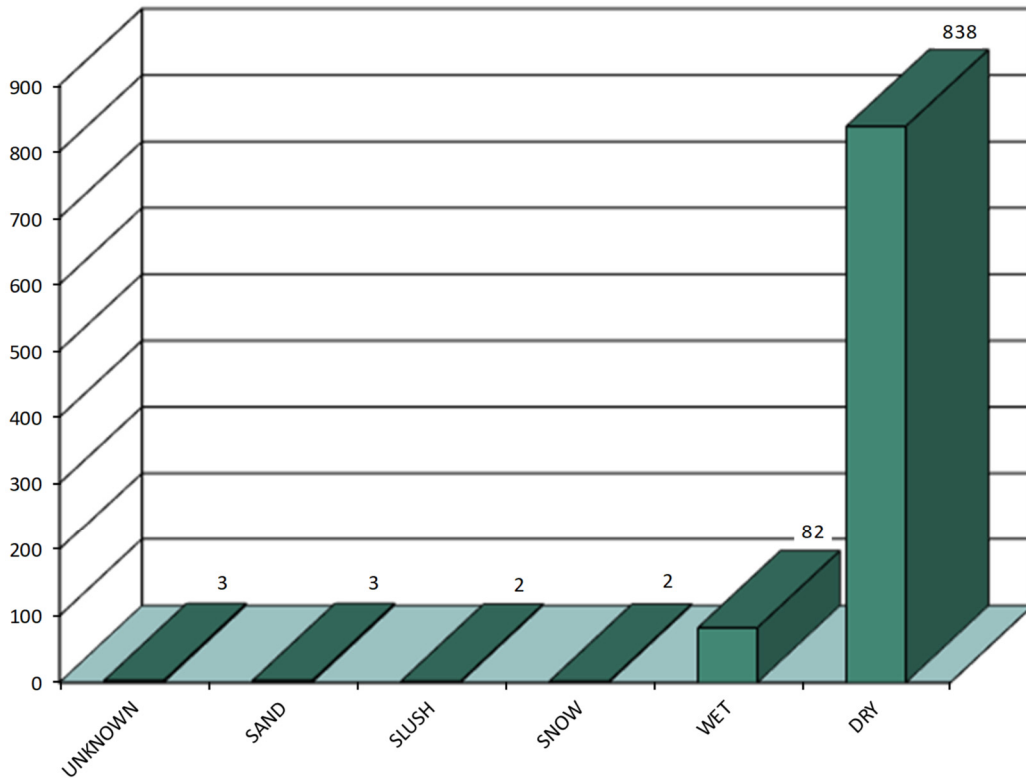
MAINE HIGHWAY BICYCLE CRASHES BY WEATHER CONDITIONS 2015 - 2019



WEATHER CONDITIONS	2015	2016	2017	2018	2019	FIVE YEAR TOTAL
BLOWING SAND, SOIL, DIRT	0	0	0	0	0	0
SEVERE CROSS WINDS	0	0	0	0	0	0
SLEET, HAIL (freezing rain or drizzle)	0	0	0	0	0	0
OTHER	1	0	0	1	1	3
FOG, SMOG, SMOKE	1	1	0	0	0	2
SNOW	1	0	1	0	0	2
BLOWING SNOW	0	0	0	0	0	0
RAIN	7	7	11	11	14	50
CLOUDY	29	32	27	14	17	119
CLEAR	150	169	148	142	145	754
TOTAL	189	209	187	168	177	930



MAINE HIGHWAY BICYCLE CRASHES BY ROAD SURFACE CONDITIONS 2015 - 2019



ROAD SURFACE CONDITIONS	2015	2016	2017	2018	2019	FIVE YEAR TOTAL
UNKNOWN	1	0	0	1	1	3
OTHER	0	0	0	0	0	0
OIL	0	0	0	0	0	0
MUD, DIRT	0	0	0	0	0	0
SAND	1	0	1	0	1	3
WATER (standing, moving)	0	0	0	0	0	0
ICE/FROST	0	0	0	0	0	0
SLUSH	1	0	1	0	0	2
SNOW	0	0	1	1	0	2
WET	15	16	15	16	20	82
DRY	171	193	169	150	155	838
TOTAL	189	209	187	168	177	930

